

# RUBIK

---

TECHNICAL DATA



# RUBIK

## Porcelain Tile

12,3x12,3 cm  
4.8x4.8"

*white  
sand  
clay  
taupe  
sage  
green  
blue  
silver  
anthracite*

RUBIK is a 12.3x12.3cm porcelain tile collection with a strong emphasis on colour. The distinguishing hallmark of these straight-edged, smooth matt tiles is their shade variation, affording all kinds of design potential. The 9 sophisticated colours that make up the collection are rich in subtle nuances, lending a distinctive personality. This can be further enhanced by the different combinations of tile joints that RUBIK allows for.

RUBIK nos propone una colección donde el color es el protagonista. Con un amplio abanico de posibilidades, presentamos una superficie lisa en acabado mate y bordes rectos, donde la variación de tonos marca la diferencia. Además, los 9 colores de los que se compone son ricos en matices, sofisticados y capaces de dotar de personalidad a cualquier ambiente. Las grandes alternativas de decoración se amplían con las diferentes combinaciones de juntas. RUBIK es un porcelánico de formato 12,3x12,3 cm.

● RUBIK GREEN/12.3X12.3 · ING. RUBIK GREEN/1X12.3





● RUBIK SAND/12,3X12,3 · RUBIK CLAY/12,3X12,3  
○ RUBIK SAGE/12,3X12,3



● RUBIK TAUPE/12.3X12.3

● RUBIK SAND/12.3X12.3 · RUBIK CLAY/12.3X12.3

○ RUBIK CLAY/12.3X12.3

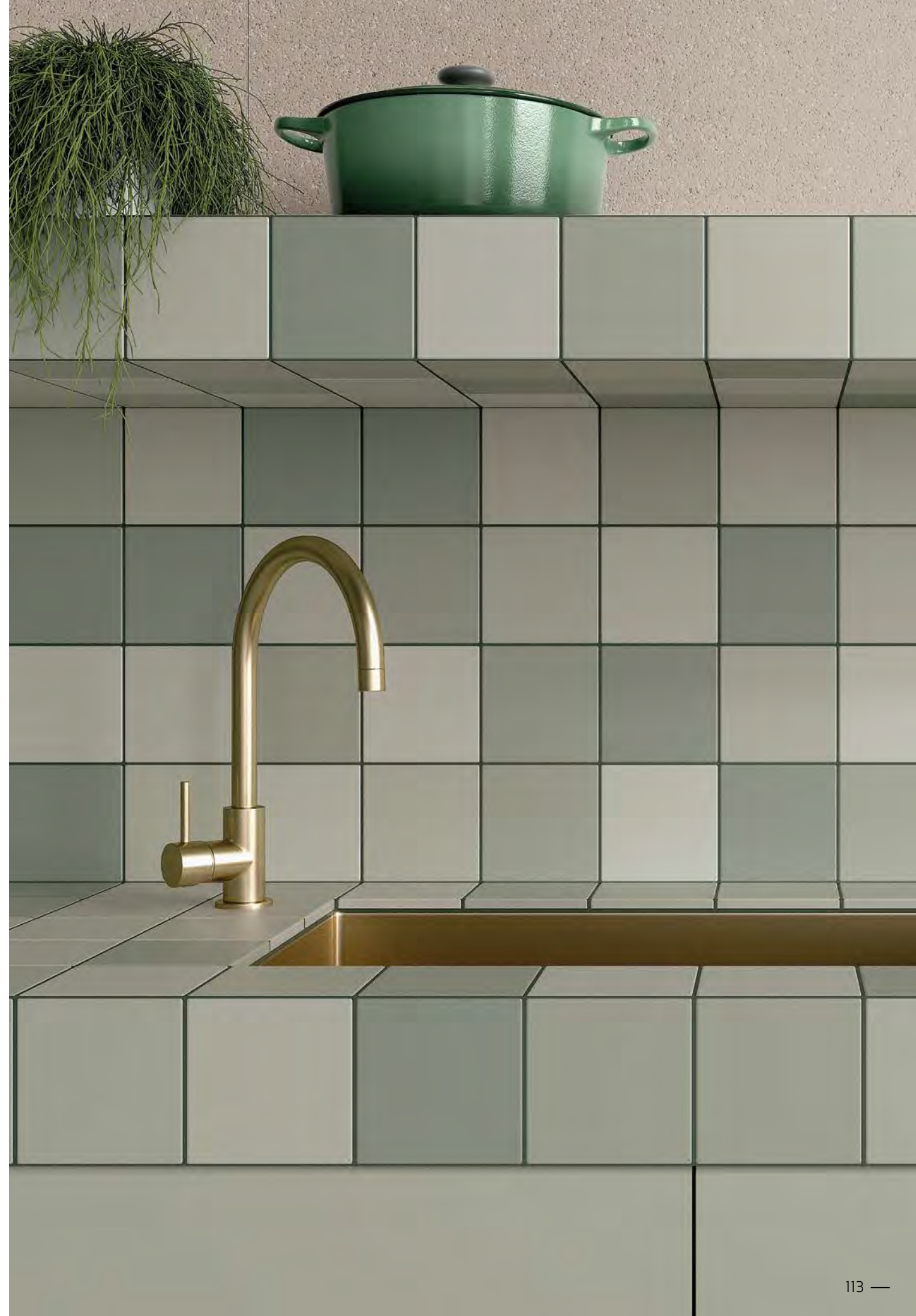
● SENA WHITE SP/90X90/C/R





- RUBIK BLUE/12,3X12,3 · RUBIK ANTHRACITE/12,3X12,3
- RUBIK WHITE/12,3X12,3 · RUBIK BLUE/12,3X12,3 · RUBIK ANTHRACITE/12,3X12,3
- RUBIK BLUE/12,3X12,3

- RUBIK SAGE/12,3X12,3 · EVOQUE TAUPE SP/90X90/C/R
- RUBIK SAGE/12,3X12,3

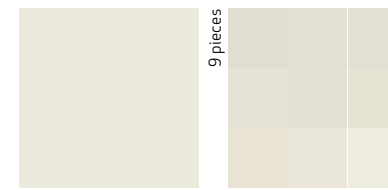


# RUBIK

porcelain tile — 12,3x12,3 / 4.8x4.8"



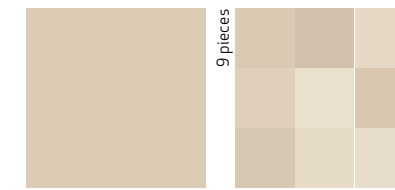
RECOMMENDED JOINT  
JUNTA RECOMENDADA  
Color — Color \*MAPEI | ULTRACOLOR PLUS  
\*\*KERAKOLL | FUGABELLA



36711 RUBIK WHITE/12,3X12,3  
Q39 (12,3x12,3 cm — 4<sup>13</sup>/16x4<sup>13</sup>/16")  
12 patterns  
\*\* 2 Kerakoll



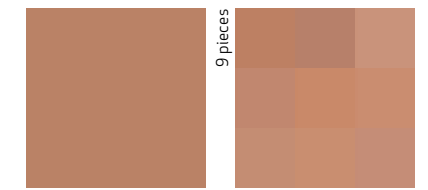
36722 ING.RUBIK WHITE/1X12,3  
H31 (1x12,3 cm — 3/8x4<sup>13</sup>/16")



36713 RUBIK SAND/12,3X12,3  
Q39 (12,3x12,3 cm — 4<sup>13</sup>/16x4<sup>13</sup>/16")  
12 patterns  
\*\* 44 Kerakoll



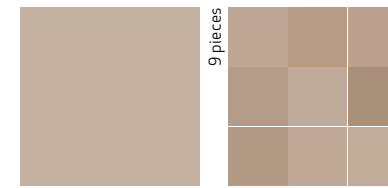
36724 ING.RUBIK SAND/1X12,3  
H31 (1x12,3 cm — 3/8x4<sup>13</sup>/16")



36720 RUBIK CLAY/12,3X12,3  
Q39 (12,3x12,3 cm — 4<sup>13</sup>/16x4<sup>13</sup>/16")  
12 patterns  
\*\* 32 Kerakoll



36793 ING.RUBIK CLAY/1X12,3  
H31 (1x12,3 cm — 3/8x4<sup>13</sup>/16")



36715 RUBIK TAUPE/12,3X12,3  
Q39 (12,3x12,3 cm — 4<sup>13</sup>/16x4<sup>13</sup>/16")  
12 patterns  
\*\* 43 Kerakoll



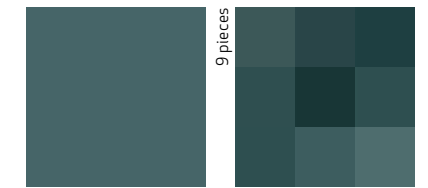
36726 ING.RUBIK TAUPE/1X12,3  
H31 (1x12,3 cm — 3/8x4<sup>13</sup>/16")



36718 RUBIK SAGE/12,3X12,3  
Q39 (12,3x12,3 cm — 4<sup>13</sup>/16x4<sup>13</sup>/16")  
12 patterns  
\* 18 Mapei



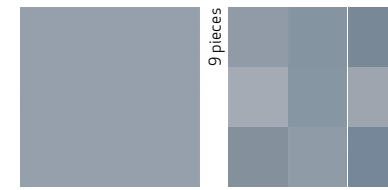
36728 ING.RUBIK SAGE/1X12,3  
H31 (1x12,3 cm — 3/8x4<sup>13</sup>/16")



36716 RUBIK GREEN/12,3X12,3  
Q39 (12,3x12,3 cm — 4<sup>13</sup>/16x4<sup>13</sup>/16")  
12 patterns  
\*\* 11 Kerakoll



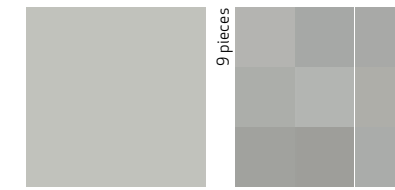
36727 ING.RUBIK GREEN/1X12,3  
H31 (1x12,3 cm — 3/8x4<sup>13</sup>/16")



36719 RUBIK BLUE/12,3X12,3  
Q39 (12,3x12,3 cm — 4<sup>13</sup>/16x4<sup>13</sup>/16")  
12 patterns  
\*\* 14 Kerakoll



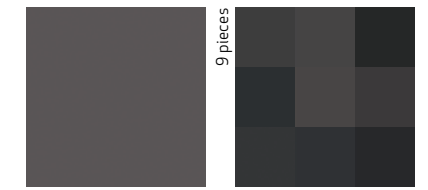
36729 ING.RUBIK BLUE/1X12,3  
H31 (1x12,3 cm — 3/8x4<sup>13</sup>/16")



36712 RUBIK SILVER/12,3X12,3  
Q39 (12,3x12,3 cm — 4<sup>13</sup>/16x4<sup>13</sup>/16")  
12 patterns  
\*\* 7 Kerakoll



36794 ING.RUBIK SILVER/1X12,3  
H31 (1x12,3 cm — 3/8x4<sup>13</sup>/16")



36714 RUBIK ANTHRACITE/12,3X12,3  
Q39 (12,3x12,3 cm — 4<sup>13</sup>/16x4<sup>13</sup>/16")  
12 patterns  
\*\* 11 Kerakoll



36725 ING.RUBIK ANTHRACITE/1X12,3  
H31 (1x12,3 cm — 3/8x4<sup>13</sup>/16")



ING: profile view  
ING: vista de perfil

#### TECHNICAL CHARACTERISTICS

	MATT	GLOSS	SHADE VARIATION	SHOWER WALL	SHOWER FLOOR	FLOOR TRAFFIC	ANTISLIP
RUBIK	•	•	•	•	•	•	R9 C1 >0,42
ING.RUBIK	•	•	•	•	•	•	

#### PACKING

UNIT	PIECES	PIECES	PIECES	m <sup>2</sup>	sq ft	WEIGHT	WEIGHT	BOXES	m <sup>2</sup>	sq ft	cm	THICKNESS	THICKNESS	
	m <sup>2</sup>	sq f	BOX	BOX	BOX	BOX	BOX (lb)	PALLET	PALLET	PALLET	PALLET	(mm)	(inch)	
RUBIK	•	66	6	34	0.51	5.54	9.52	20.94	120	61.73	664.42	120x80x90	8.7	0.34
ING.RUBIK	•	612	76	60	0.07	0.79	1.3	2.86	180	13.28	142.99	120x80x96	10	0.39



---

Quotations, Samples + Information

**Freephone:** 0800 021 4835

**Email:** [info@ctdarchitecturaltiles.co.uk](mailto:info@ctdarchitecturaltiles.co.uk)

**Follow us:**  [ctdarchitecturaltiles](#)  [ctd architectural tiles](#)  [@architecttiles](#)

 [architecttiles](#)  [architecttiles](#)

[ctdarchitecturaltiles.co.uk](http://ctdarchitecturaltiles.co.uk)

