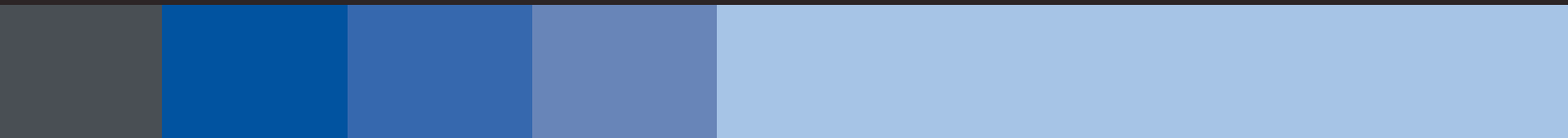


FÁRGBLOCK

TECHNICAL DATA





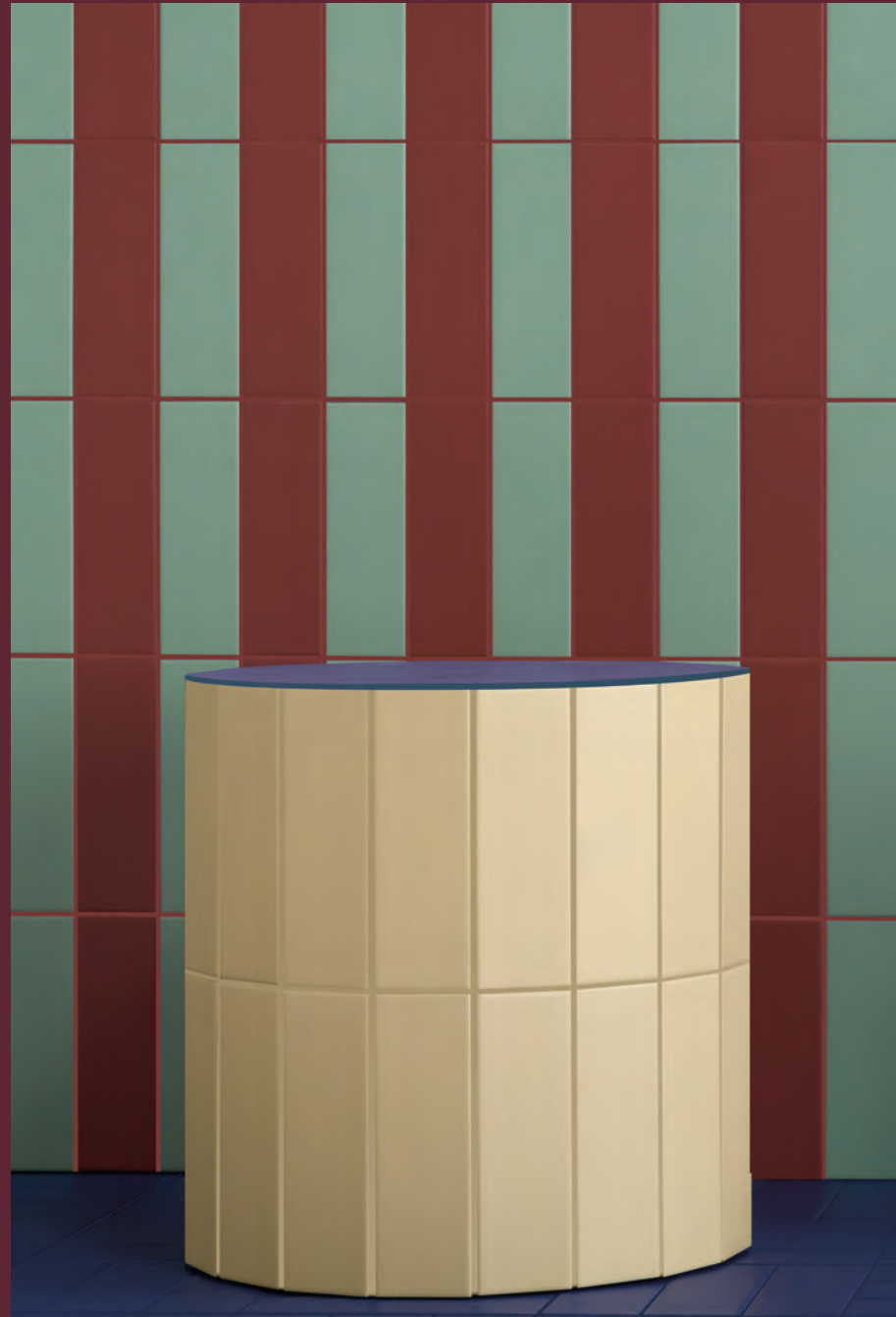
Gres Porcellanato
Porcelain stoneware

5X15CM 
2"X6"

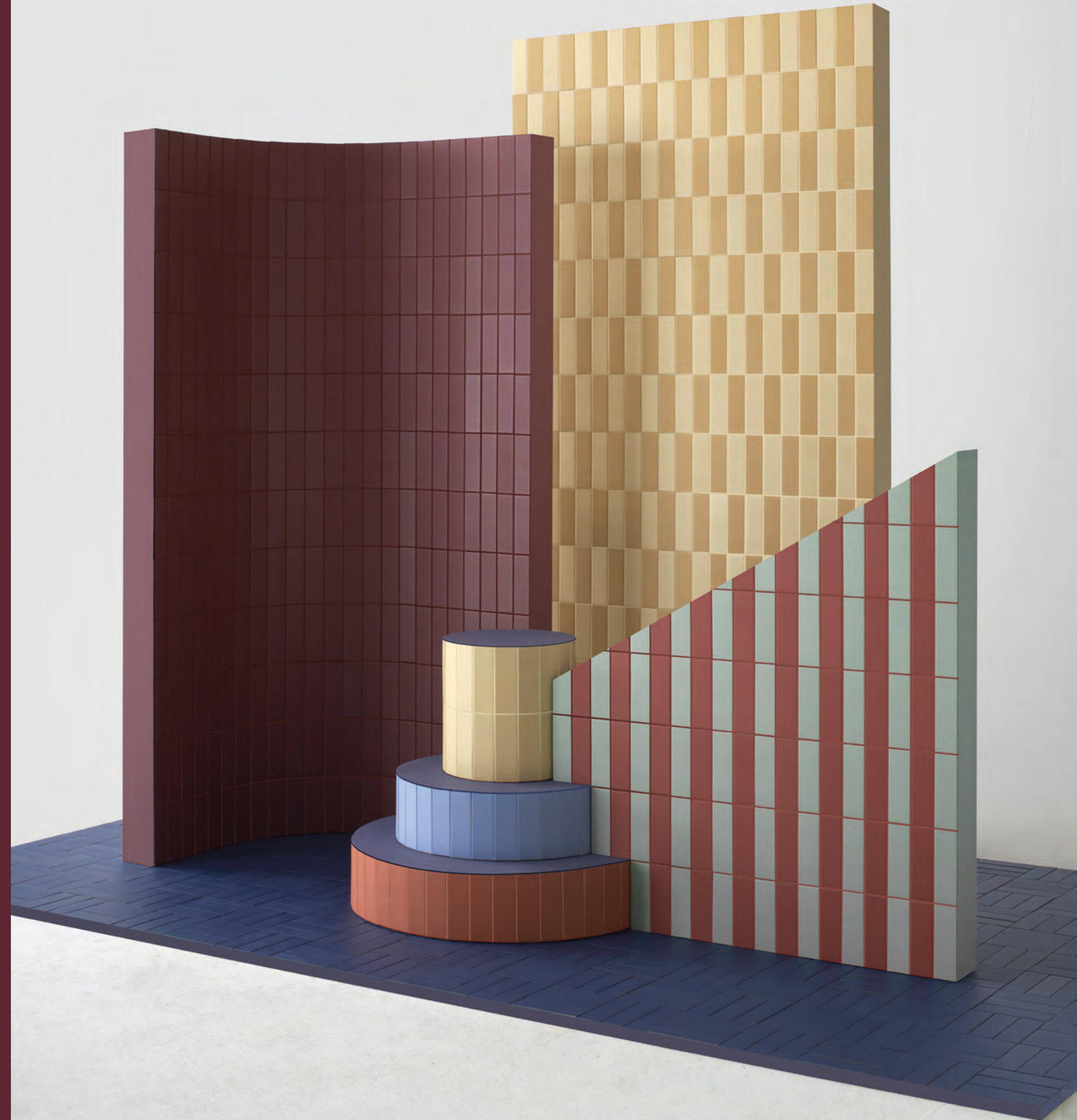
8MM 

Monocromatico
Monochromatic

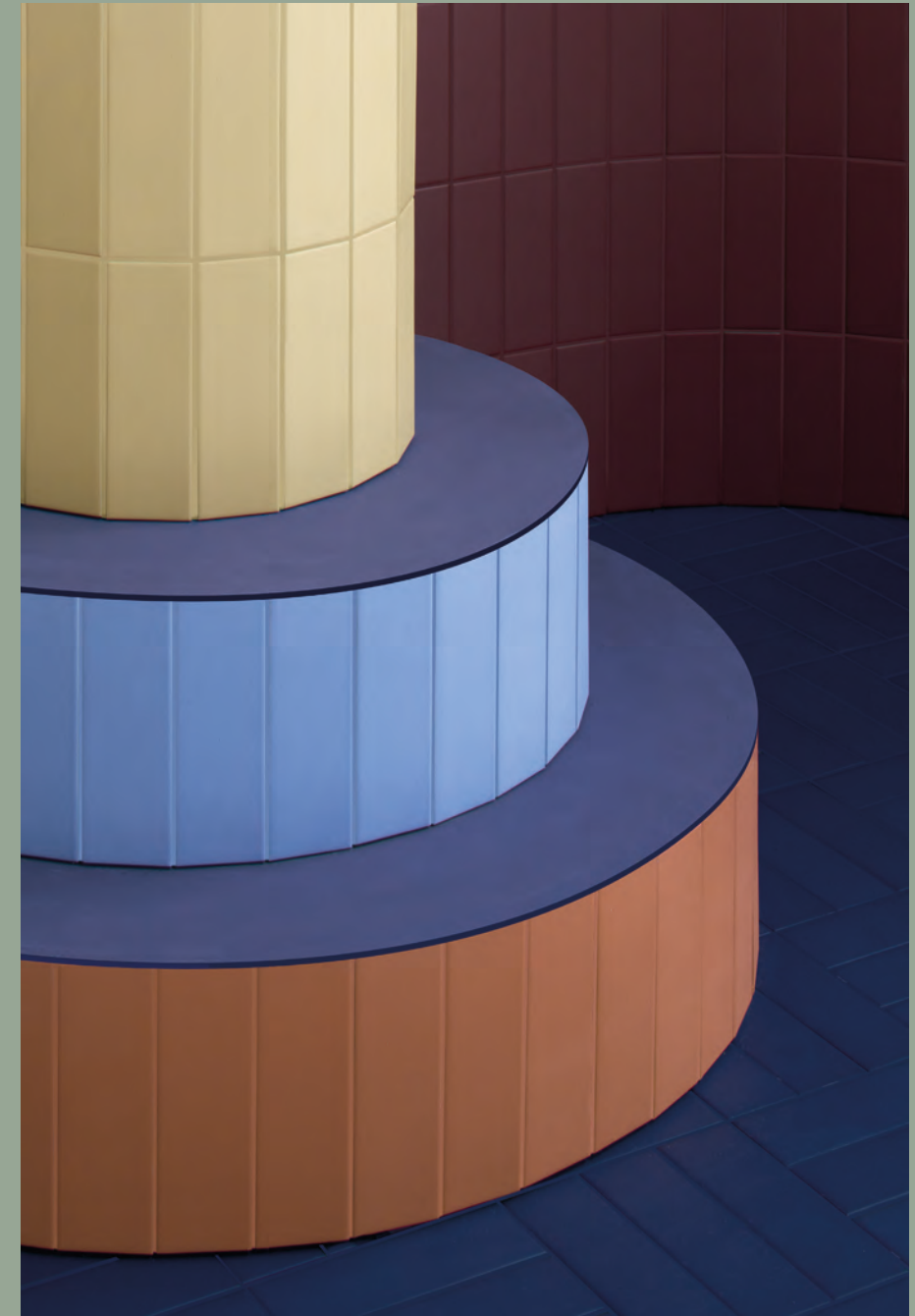
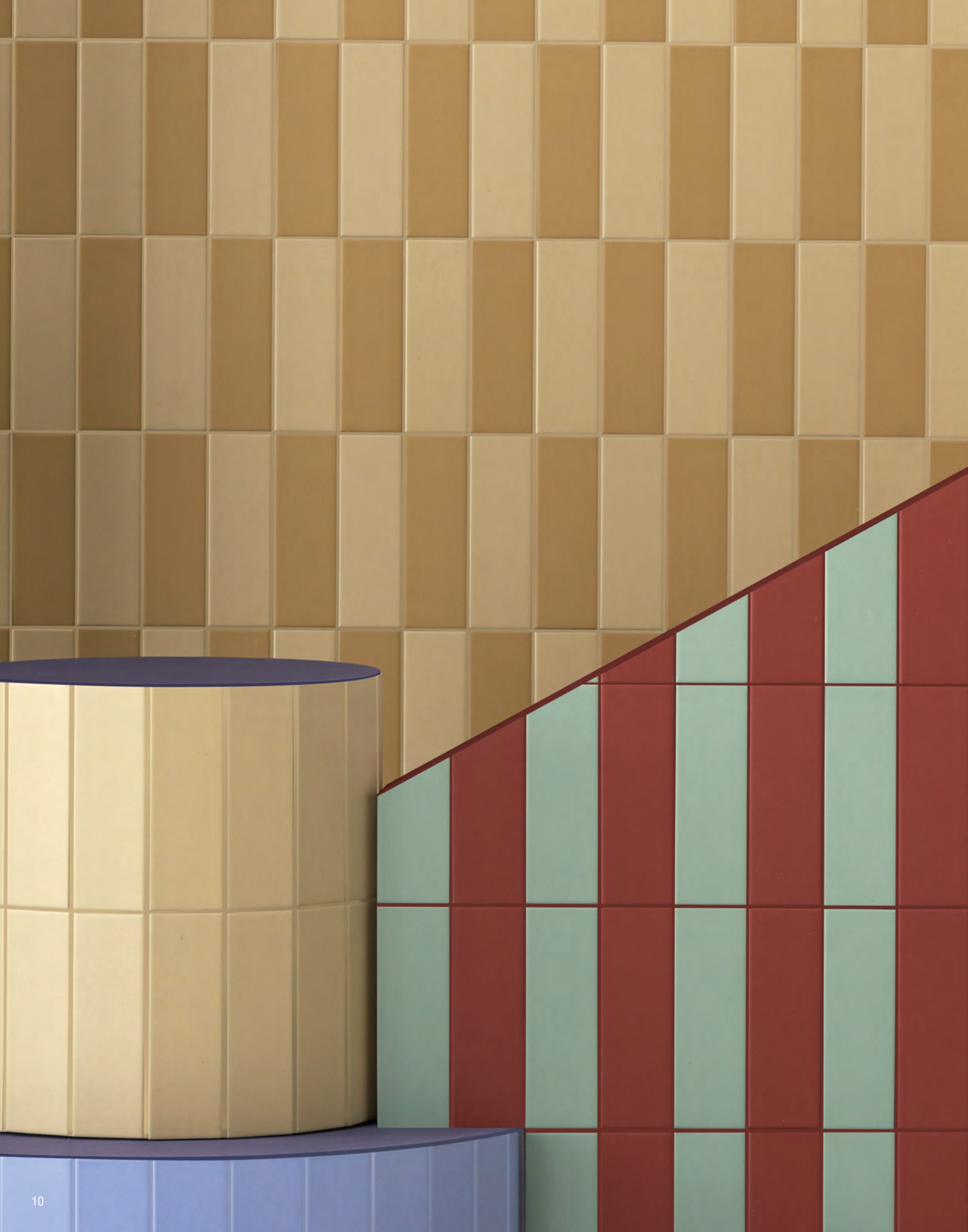
Färgblock is available in a 5x15cm porcelain stoneware format. The collection's added value, in fact, is its format, which has been chosen as the lengths of its sides allow modular patterns to be created. Originally released in a gloss finish and later enhanced with a new matt finish, Färgblock combines the technical performance of stoneware with a powerful and contemporary style. It is a versatile collection that can be inserted in indoor and outdoor applications in both residential and retail contexts. The addition of its matt finish also allows a sense of surface continuity to be created between floor and wall tiles. Its wide colour range, consisting of 13 gloss and matt colours, offers decisive contrasts and delicate tone on tone juxtapositions that make walls come alive. Alternating the two different, gloss and matt finishes and the use of coloured grouts are also important tools that offer planners and designers multiple creative possibilities.



färgblock menta matt, champagne matt, oceano matt, cannella matt



färgblock borgogna matt, senape matt, champagne matt, cannella matt, menta matt,
cielo matt, arancio matt, oceano matt



färgblock borgogna matt, champagne matt, cielo matt,
arancio matt, oceano matt

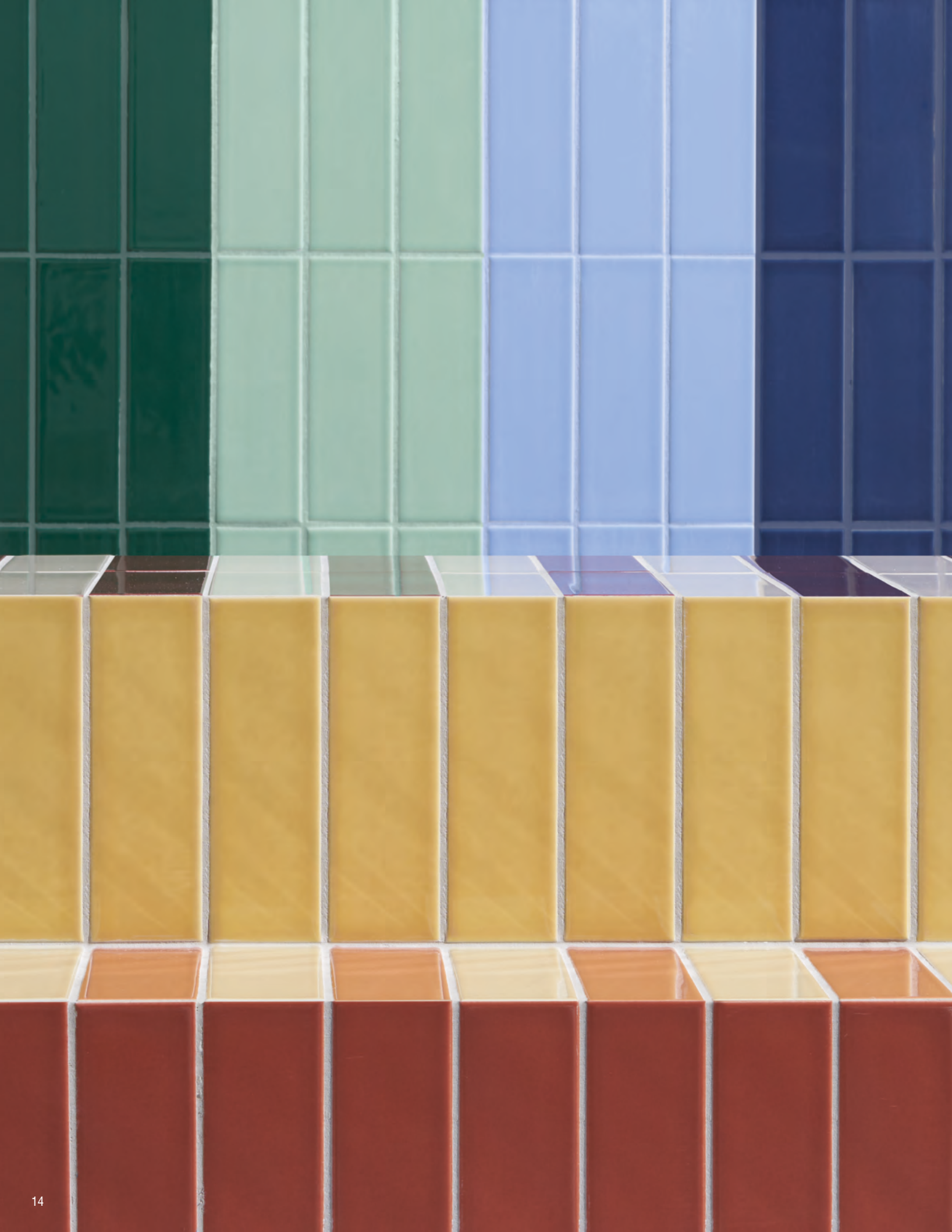
färgblock senape matt, champagne matt, cannella matt,
menta matt, cielo matt,



färgblock oceano lucido, cielo lucido, arancio lucido, borgogna lucido, menta lucido, cannella lucido

färgblock senape lucido, champagne lucido, cannella lucido, oceano lucido, cielo lucido, arancio lucido, cipria lucido, borgogna lucido, bianco lucido, cenere lucido, smeraldo lucido, menta lucido





färgblock senape lucido, champagne lucido, cannella lucido, oceano lucido, arancio lucido, cipria lucido, borgogna lucido, bianco lucido, cenere lucido

färgblock senape lucido, champagne lucido, cannella lucido, borgogna lucido, menta lucido, smeraldo lucido, cielo lucido, oceano lucido, arancio lucido



färgblock bianco matt, bianco lucido, senape matt, borgogna matt, champagne matt, oceano matt



färgblock bianco lucido, senape matt, champagne matt, oceano matt

färgblock bianco matt, senape matt, borgogna matt, champagne matt, oceano matt

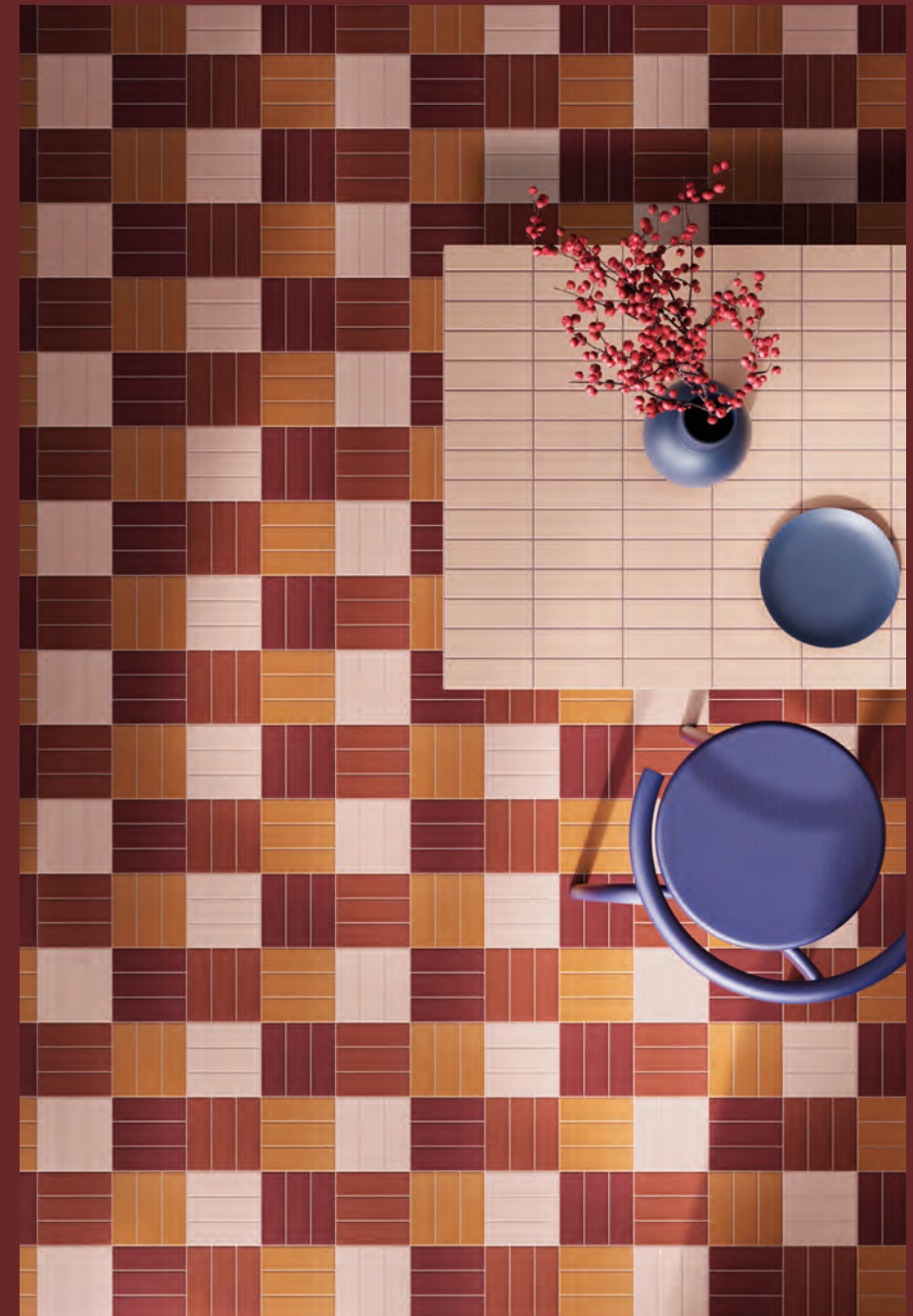


färgblock borgogna matt, senape matt, sabbia matt, cenere matt, cielo lucido



färgblock borgogna matt, senape matt, sabbia matt,
cenere matt, cielo lucido

färgblock borgogna matt, senape matt, sabbia matt, cenere matt, cielo lucido



färgblock cannella matt, cipria matt,
arancio matt, borgogna matt

färgblock cielo matt, cielo lucido, cannella matt,
cipria matt, arancio matt, borgogna matt



färgblock menta lucido, smeraldo lucido, arancio lucido, cipria lucido,
bianco lucido, cannella lucido



färgblock menta lucido, smeraldo lucido, arancio lucido, cipria lucido,
bianco lucido, cannella lucido

färgblock arancio lucido, cipria lucido, bianco lucido, cannella lucido



färgbloxx smeraldo lucido, sabbia lucido, cenere lucido, bianco lucido, champagne lucido
confetti bianco.beige



färgblock smeraldo lucido, sabbia lucido, cenere lucido, champagne lucido
confetti bianco.beige

färgblock sabbia lucido, bianco lucido, cenere lucido
confetti bianco.beige, base Oltre cotto



färgblokk smeraldo lucido, menta lucido, cielo lucido, oceano lucido, arancio lucido, senape lucido
oltre9 cotto.blu



färgblock smeraldo lucido, cielo lucido, arancio lucido,
oltre9 cotto.blu

färgblock smeraldo lucido, menta lucido, cielo lucido, oceano lucido, arancio lucido,
oltre9 cotto.blu



färgblock cannella lucido, cipria lucido, oceano lucido,
oltre9 cotto.blu

färgblock cannella lucido, cipria lucido, oceano lucido,
oltre9 cotto.blu



färgblock menta lucido, cipria lucido

färgblock cielo lucido, menta lucido, borgogna lucido, cipria lucido



färgblock menta lucido, cielo lucido

FÄRGBLOCK

Teklan edition x QC

menta
lucido

menta
matt

smeraldo
lucido

smeraldo
matt

cielo
lucido

cielo
matt

oceano
lucido

oceano
matt

champagne
lucido

champagne
matt

senape
lucido

senape
matt

arancio
lucido

arancio
matt

cipria
lucido

cipria
matt

cannella
lucido

cannella
matt

/ COLOURS

COLORI

borgogna
lucido

borgogna
matt

cenere
lucido

cenere
matt

sabbia
lucido

sabbia
matt

bianco
lucido

bianco
matt

/ NEUTRAL COLOURS

COLORI
NEUTRI

CIELO

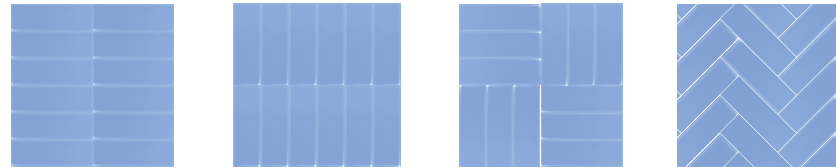
SCHEMI DI POSA LAYING SCHEME

Gres porcellanato
Porcelain stoneware

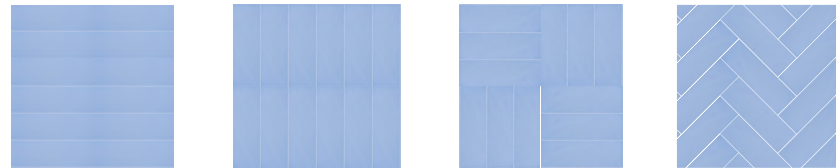
5X15CM
2"X6"

8MM
Monocromatic
Monochromatic

POSE LAYING SCHEME



POSE LAYING SCHEME



CIELO LUCIDO FGB104L ■09



CIELO MATT FGB117M ■09

STUCCHI CONSIGLIATI SUGGESTED GROUTS

Kerakoll

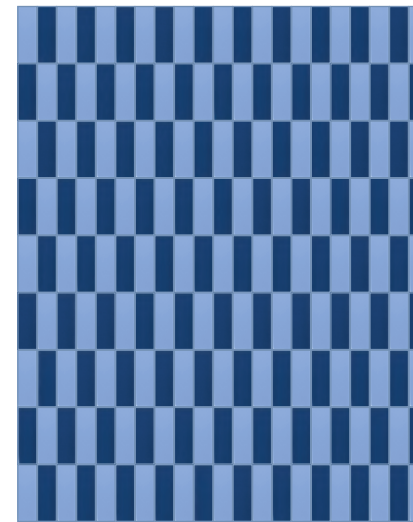
Mapei

Laticrete

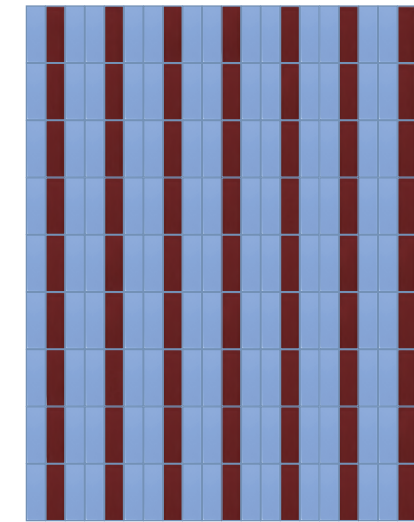
TONO SU TONO
TONE ON TONE



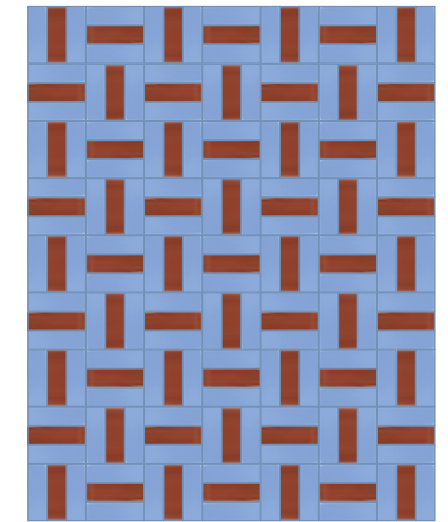
A CONTRASTO
CONTRASTING



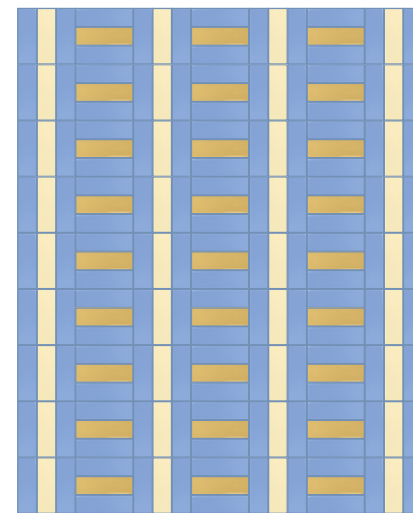
CERULEAN 168
50% CIELO | 50% OCEANO



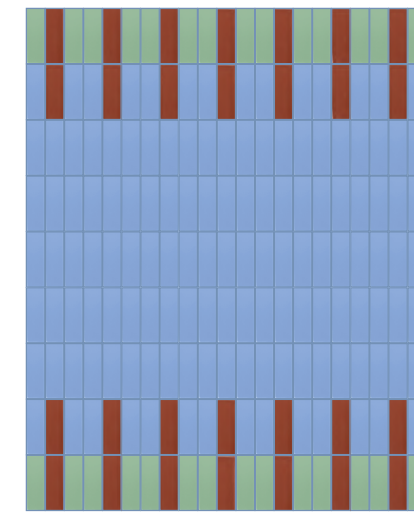
CERULEAN 168
66% CIELO | 34% BORGOGNA



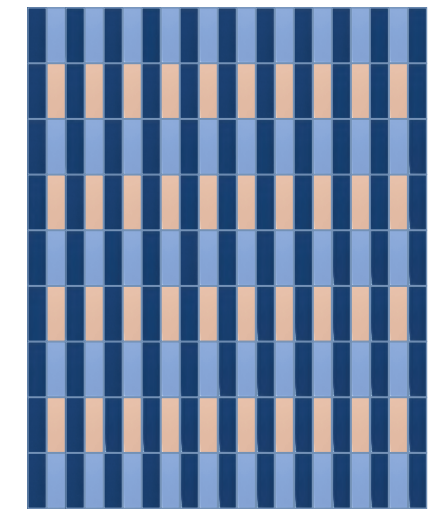
CERULEAN 168
66% CIELO | 34% CANNELLA



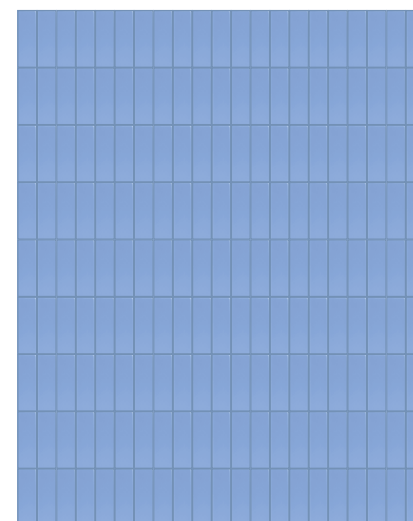
CERULEAN 168
66% CIELO | 19% CHAMPAGNE | 15% SENAPE



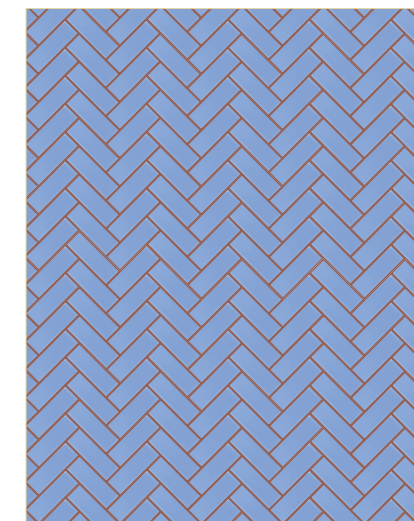
CERULEAN 168
70% CIELO | 15% MENTA | 15% CANNELLA



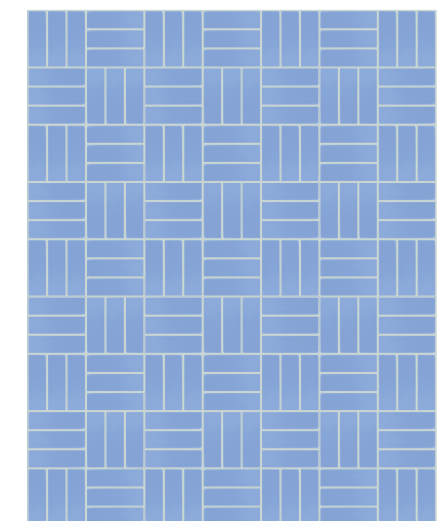
CERULEAN 168
27% CIELO | 20% CIPRIA | 53% OCEANO



CERULEAN 168
100% CIELO



TERRA COTTA 143
100% CIELO



FUGABELLA COLOR 18
100% CIELO

OCEANO

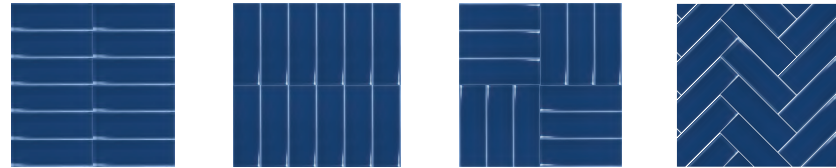
SCHEMI DI POSA LAYING SCHEME

Gres porcellanato
Porcelain stoneware

5X15CM
2"X6"

8MM
Monocromatic
Monochromatic

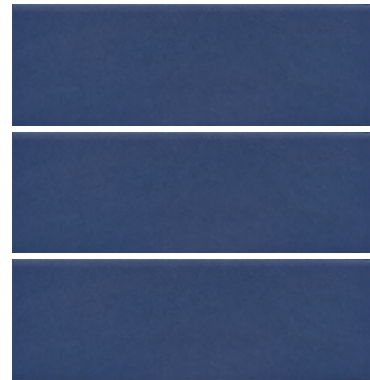
POSE LAYING SCHEME



POSE LAYING SCHEME



OCEANO LUCIDO FGB105L ■10



OCEANO MATT FGB118M ■10

STUCCHI CONSIGLIATI SUGGESTED GROUTS

Kerakoll

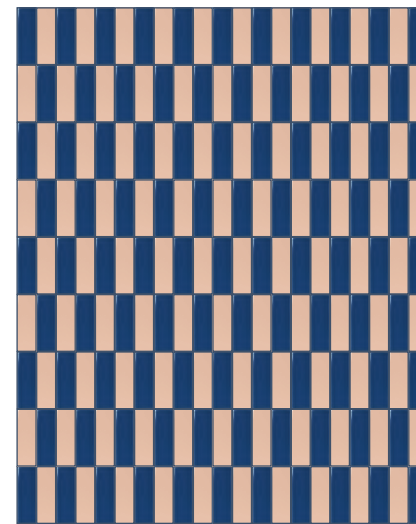
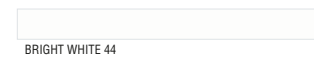
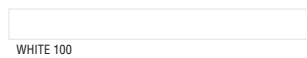
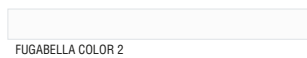
Mapei

Laticrete

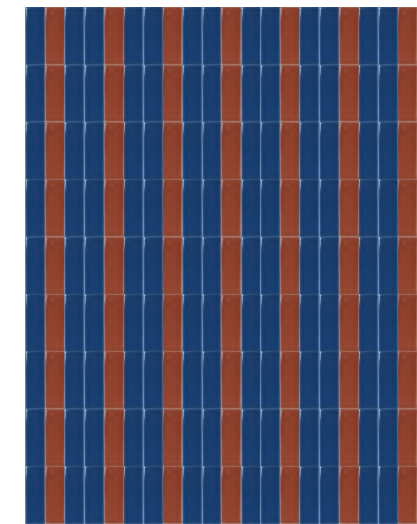
TONO SU TONO
TONE ON TONE



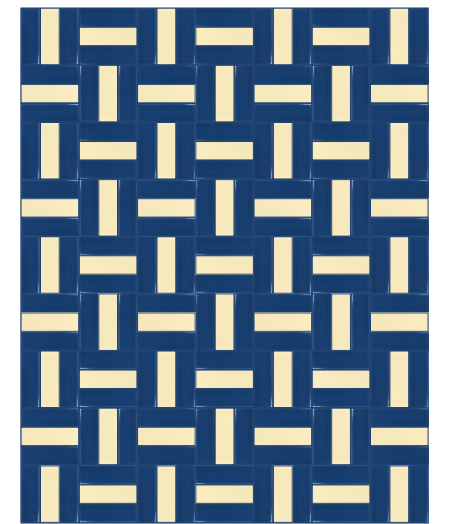
A CONTRASTO
CONTRASTING



FUGABELLA COLOR 16
50% OCEANO | 50% CIPRIA



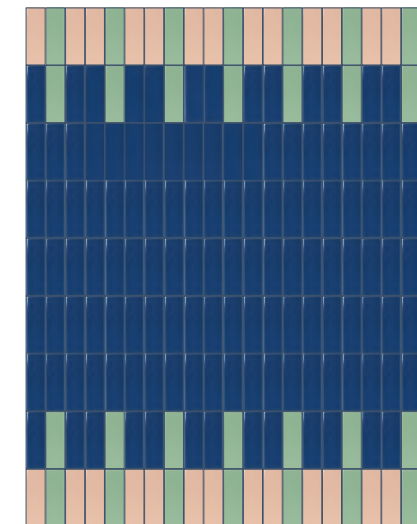
FUGABELLA COLOR 16
66% OCEANO | 34% CANNELLA



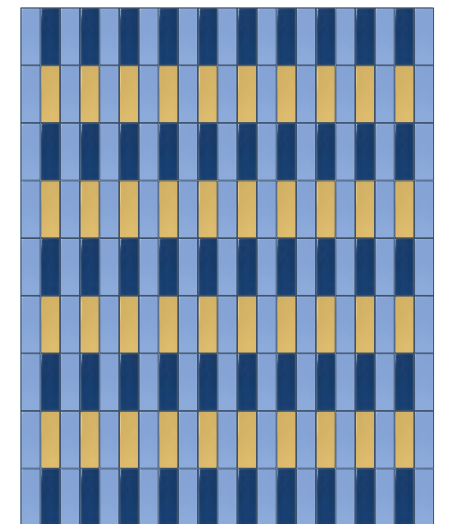
FUGABELLA COLOR 16
66% OCEANO | 34% CHAMPAGNE



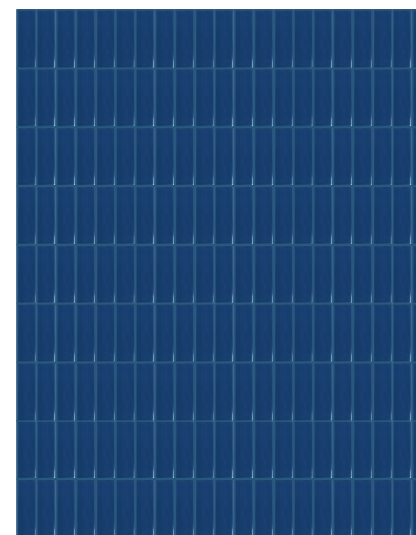
FUGABELLA COLOR 16
66% OCEANO | 19% CHAMPAGNE | 15% BIANCO



FUGABELLA COLOR 16
70% OCEANO | 15% MENTA | 15% CIPRIA



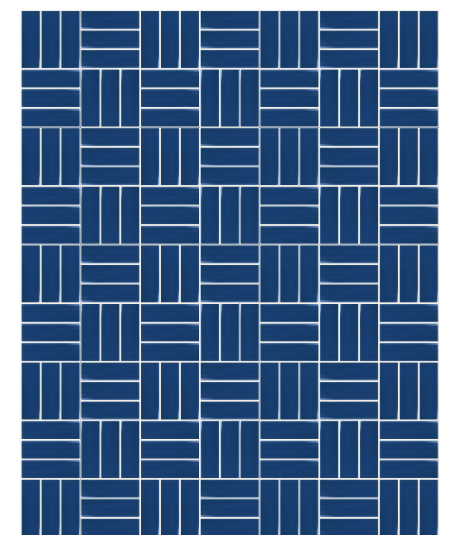
FUGABELLA COLOR 16
27% OCEANO | 20% SENAPE | 53% CIELO



FUGABELLA COLOR 16
100% OCEANO



FUGABELLA COLOR 30
100% OCEANO



FUGABELLA COLOR 2
100% OCEANO

MENTA

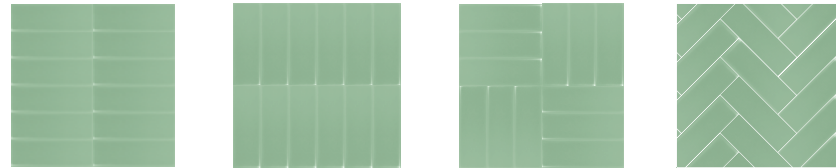
SCHEMI DI POSA LAYING SCHEME

Gres porcellanato
Porcelain stoneware

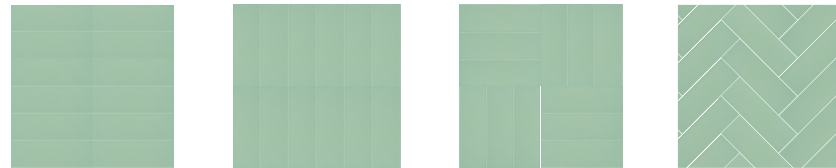
5X15CM
2"X6"

8MM
Monocromatic
Monochromatic

POSE LAYING SCHEME



POSE LAYING SCHEME



MENTA LUCIDO FGB106L ■09



MENTA MATT FGB119M ■09

STUCCHI CONSIGLIATI SUGGESTED GROUTS

Kerakoll

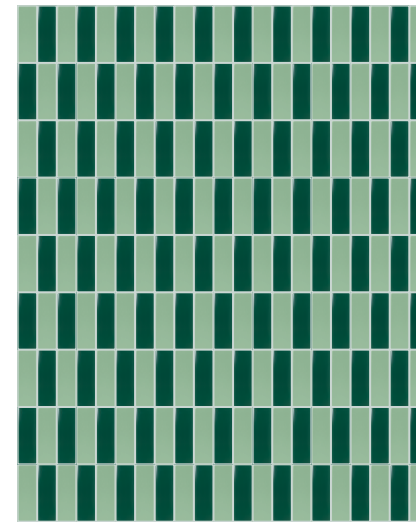
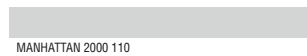
Mapei

Laticrete

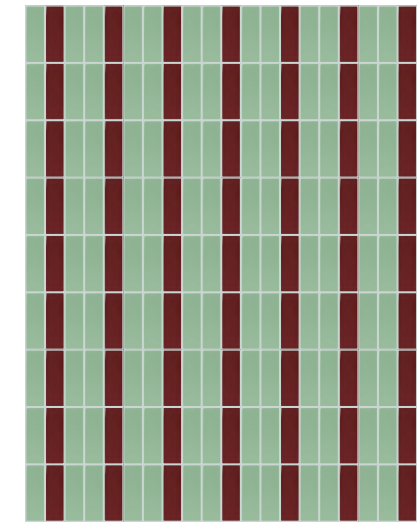
TONO SU TONO
TONE ON TONE



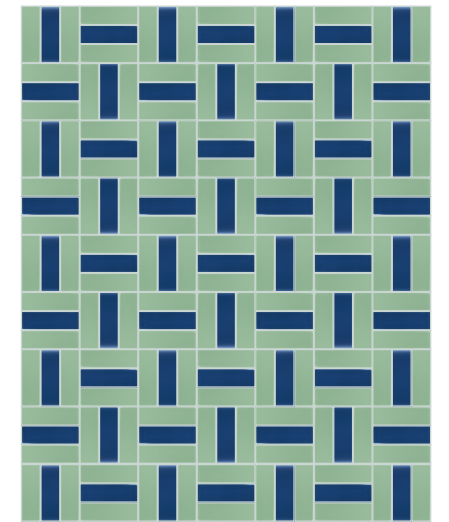
A CONTRASTO
CONTRASTING



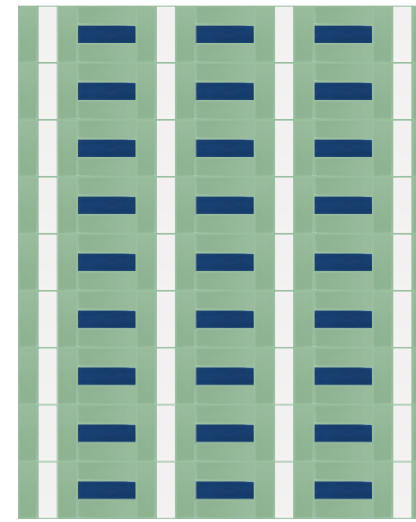
SEA GLASS 50
50% MENTA | 50% SMERALDO



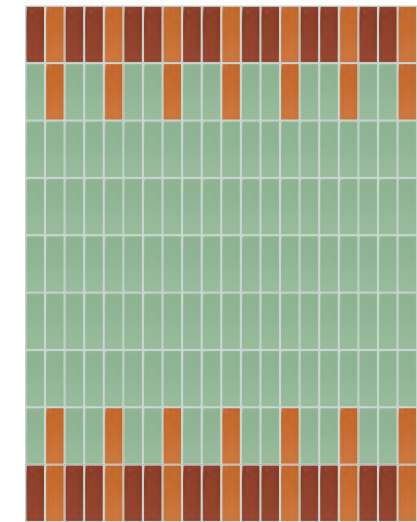
SEA GLASS 50
66% MENTA | 34% BORGOGNA



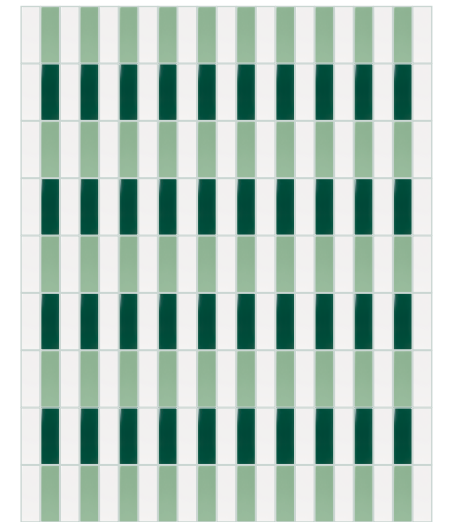
SEA GLASS 50
66% MENTA | 34% OCEANO



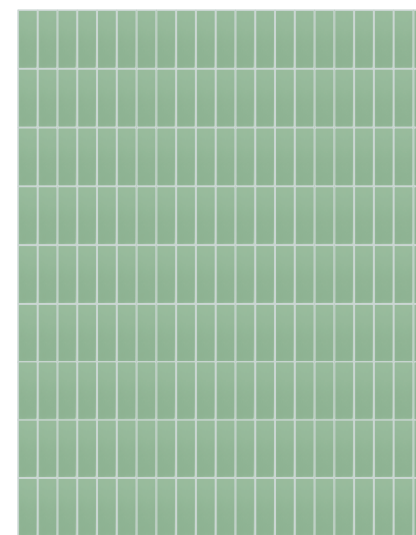
SEA GLASS 50
66% MENTA | 19% BIANCO | 15% OCEANO



SEA GLASS 50
70% MENTA | 15% ARANCIO | 15% CANNELLA



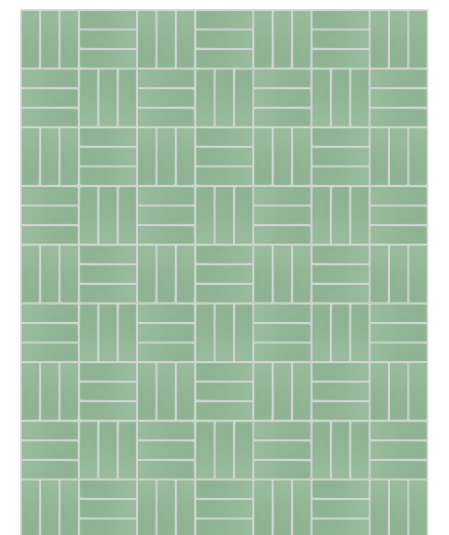
SEA GLASS 50
27% MENTA | 20% SMERALDO | 53% BIANCO



SEA GLASS 50
100% MENTA



FUGABELLA COLOR 42
100% MENTA



MANHATTAN 2000 110
100% MENTA

SMERALDO

SCHEMI DI POSA LAYING SCHEME

Gres porcellanato
Porcelain stoneware

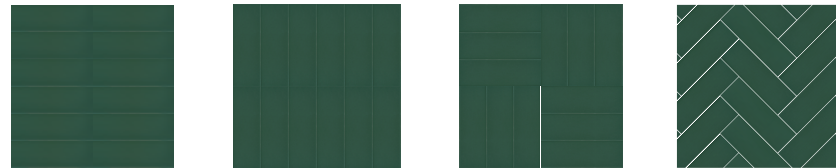
5X15CM
2"X6"

8MM
Monocromatic
Monochromatic

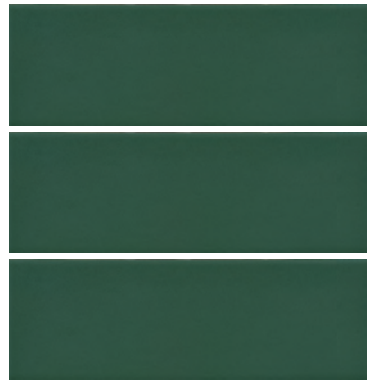
POSE LAYING SCHEME



POSE LAYING SCHEME



SMERALDO LUCIDO FGB107L ■10



SMERALDO MATT FGB120M ■10

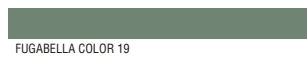
STUCCHI CONSIGLIATI SUGGESTED GROUTS

Kerakoll

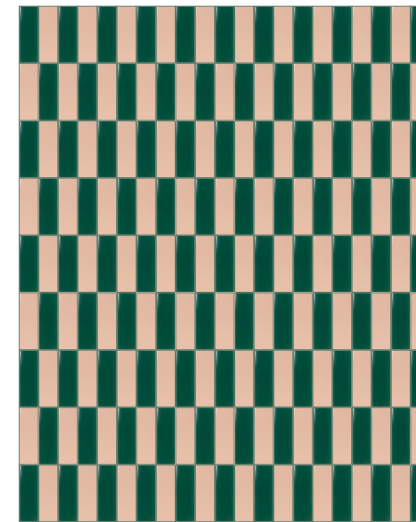
Mapei

Laticrete

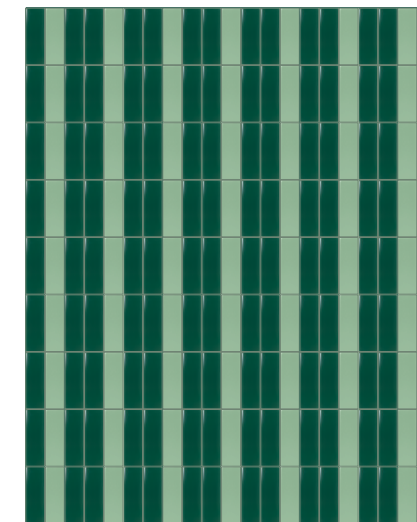
TONO SU TONO
TONE ON TONE



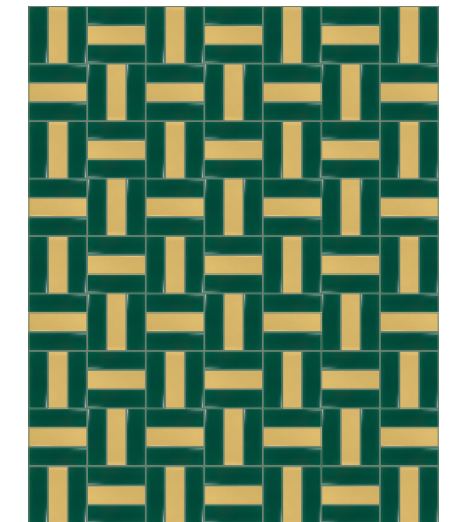
A CONTRASTO
CONTRASTING



FUGABELLA COLOR 19
50% SMERALDO | 50% CIPRIA



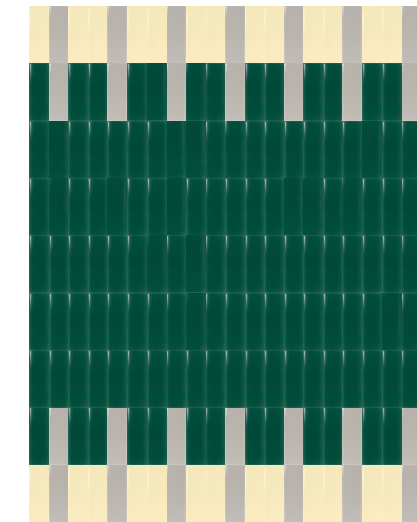
FUGABELLA COLOR 19
66% SMERALDO | 34% MENTA



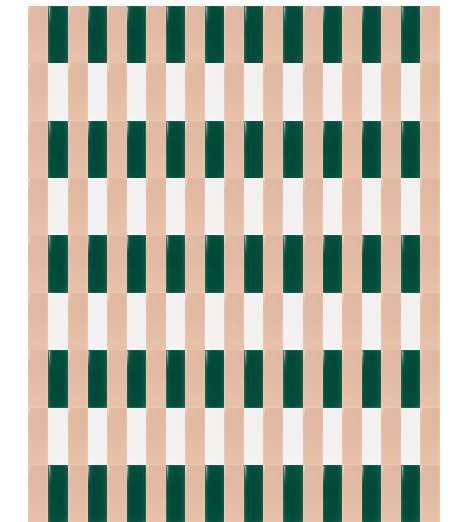
FUGABELLA COLOR 19
66% SMERALDO | 34% SENAPE



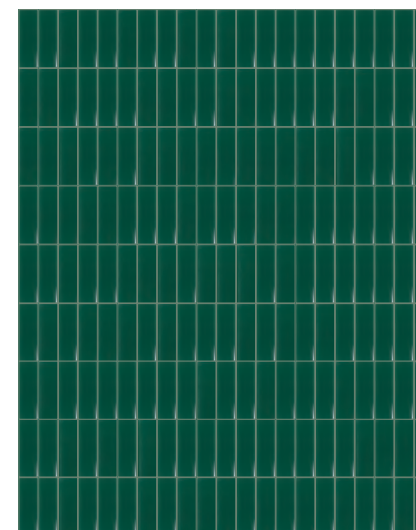
FUGABELLA COLOR 19
66% SMERALDO | 19% SABBIA | 15% CANNELLA



FUGABELLA COLOR 19
70% SMERALDO | 15% CHAMPAGNE | 15% CENERE



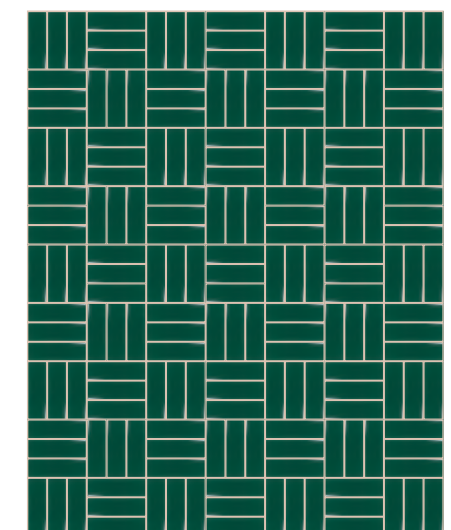
FUGABELLA COLOR 19
27% SMERALDO | 20% BIANCO | 53% CIPRIA



FUGABELLA COLOR 19
100% SMERALDO



KASHMIRE 41
100% SMERALDO



FUGABELLA COLOR 39
100% SMERALDO

CIPRIA

SCHEMI DI POSA LAYING SCHEME

Gres porcellanato
Porcelain stoneware

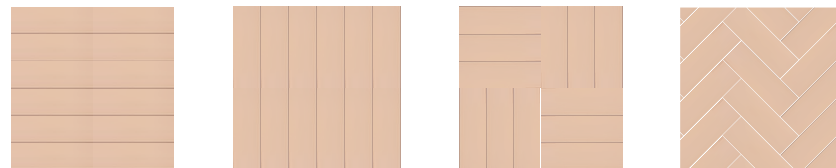
5X15CM
2"X6"

8MM
Monocromatic
Monochromatic

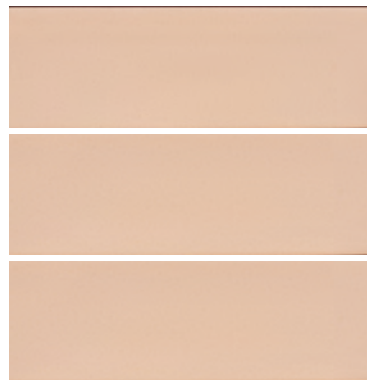
POSE LAYING SCHEME



POSE LAYING SCHEME



CIPRIA LUCIDO FGB108L ■09



CIPRIA MATT FGB121M ■09

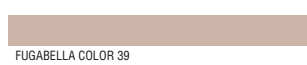
STUCCHI CONSIGLIATI SUGGESTED GROUTS

Kerakoll

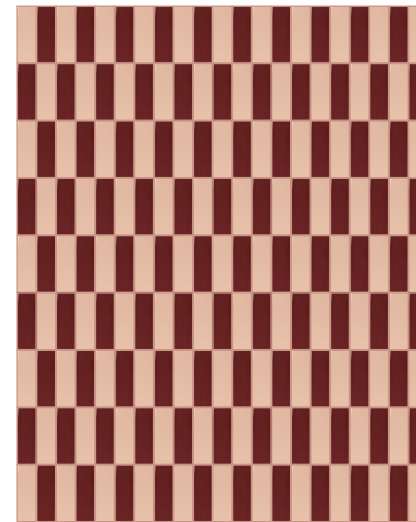
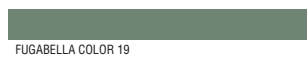
Mapei

Laticrete

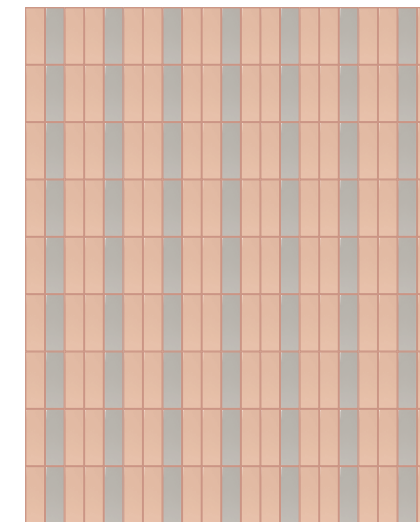
TONO SU TONO
TONE ON TONE



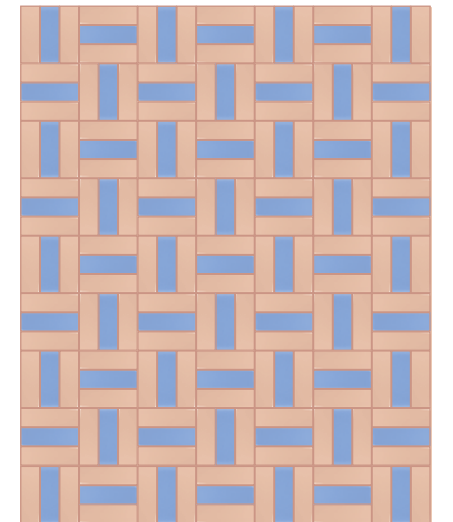
A CONTRASTO
CONTRASTING



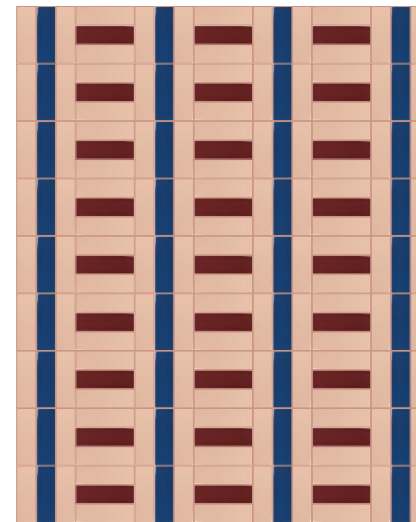
SALTILLO 92
50% CIPRIA | 50% BORGOGNA



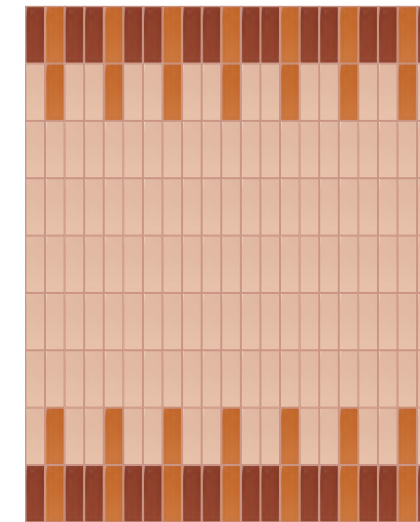
SALTILLO 92
66% CIPRIA | 34% CENERE



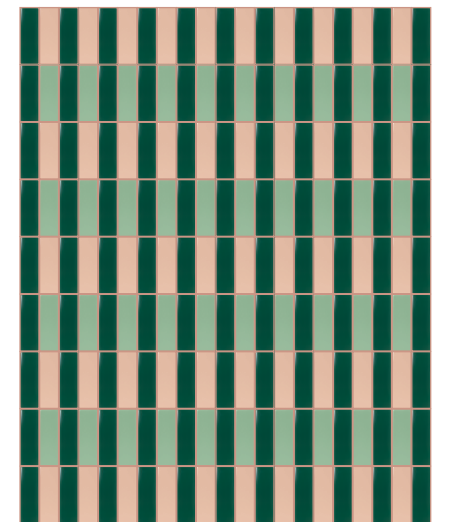
SALTILLO 92
66% CIPRIA | 34% CIELO



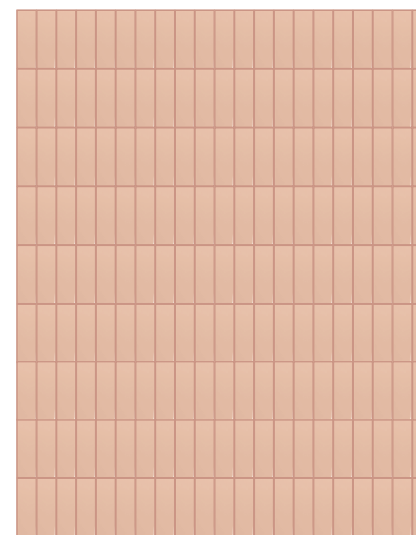
SALTILLO 92
66% CIPRIA | 19% OCEANO | 15% BORGOGNA



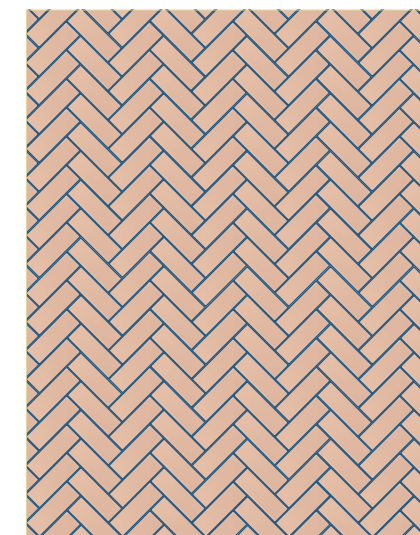
SALTILLO 92
70% CIPRIA | 15% ARANCIO | 15% CANNELLA



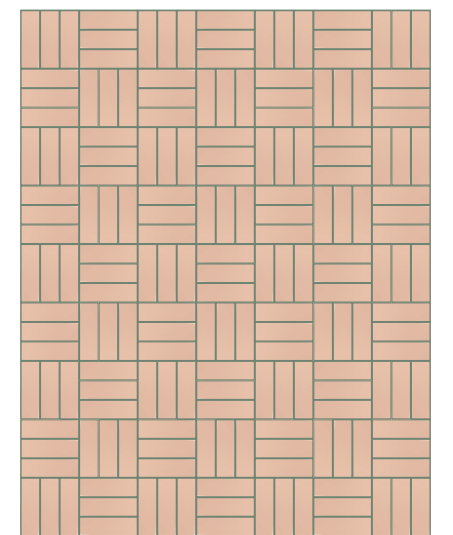
SALTILLO 92
27% CIPRIA | 20% MENTA | 53% SMERALDO



SALTILLO 92
100% CIPRIA



CHAMBRAY 37
100% CIPRIA



FUGABELLA COLOR 19
100% CIPRIA

ARANCIO

SCHEMI DI POSA LAYING SCHEME

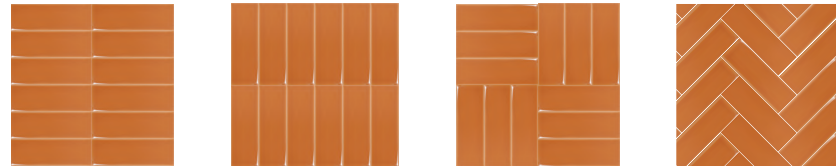
Gres porcellanato
Porcelain stoneware

5X15CM
2"X6"

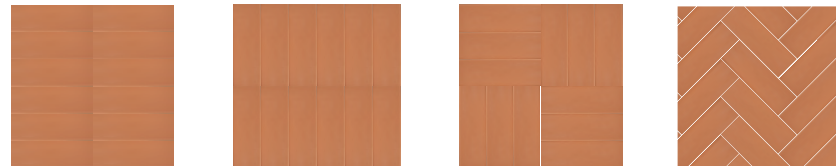
8MM

Monocromatico
Monochromatic

POSE LAYING SCHEME

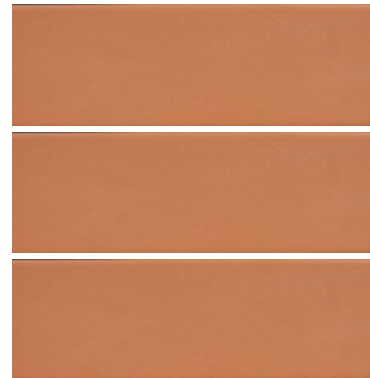


POSE LAYING SCHEME



ARANCIO LUCIDO

FGB109L ■ 09



ARANCIO MATT

FGB122M ■ 09

STUCCHI CONSIGLIATI SUGGESTED GROUTS

Kerakoll

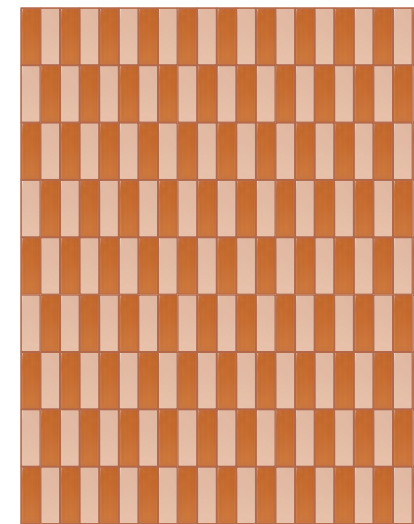
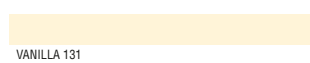
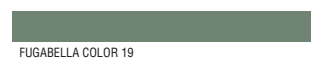
Mapei

Laticrete

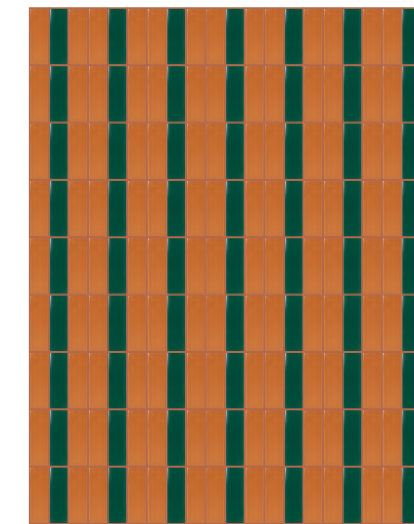
TONO SU TONO
TONE ON TONE



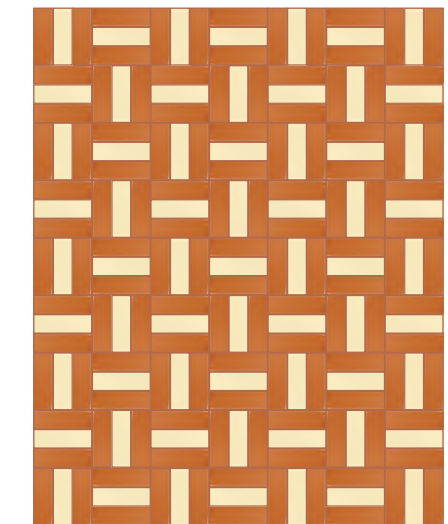
A CONTRASTO
CONTRASTING



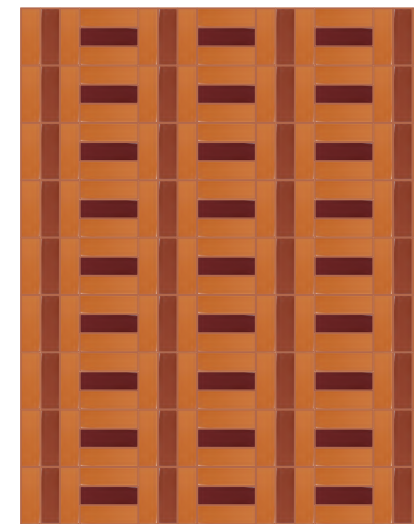
CINNAMON 47
50% ARANCIO | 50% CIPRIA



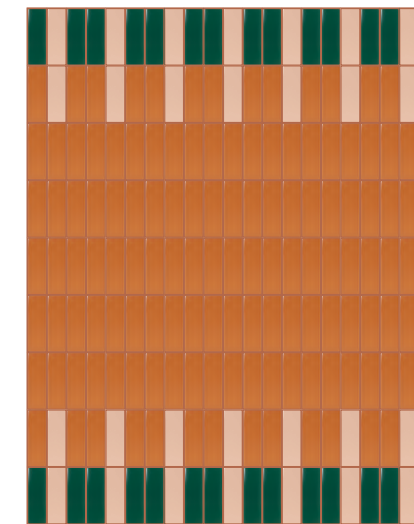
CINNAMON 47
66% ARANCIO | 34% SMERALDO



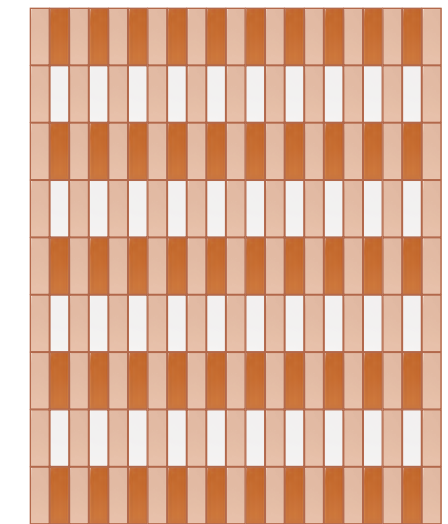
CINNAMON 47
66% ARANCIO | 34% CHAMPAGNE



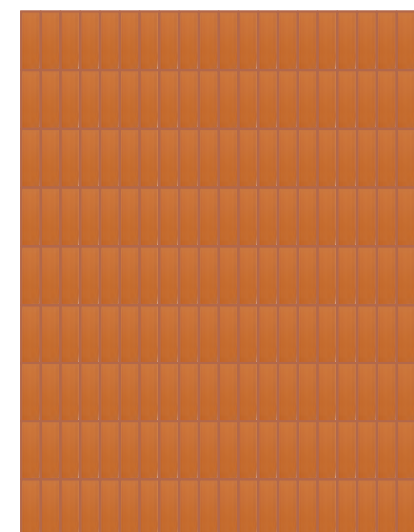
CINNAMON 47
66% ARANCIO | 19% CANNELLA | 15% BORGOGNA



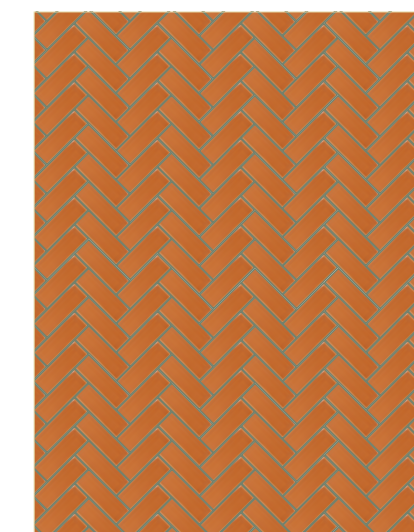
CINNAMON 47
70% ARANCIO | 15% CIPRIA | 15% SMERALDO



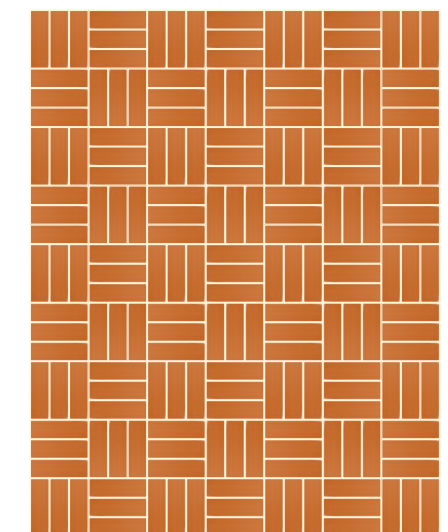
CINNAMON 47
27% ARANCIO | 20% BIANCO | 53% CIPRIA



CINNAMON 47
100% ARANCIO



BOSTON FERN 33
100% ARANCIO



VANILLA 131
100% ARANCIO

CANNELLA

SCHEMI DI POSA LAYING SCHEME

Gres porcellanato
Porcelain stoneware

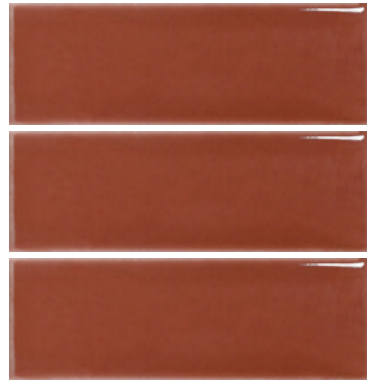
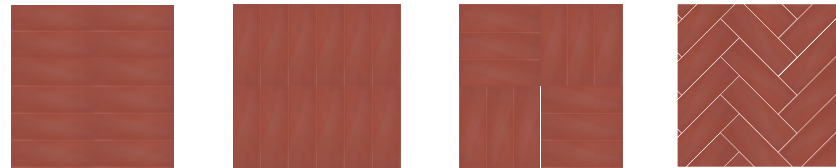
5X15CM
2"X6"

8MM
Monocromatic
Monochromatic

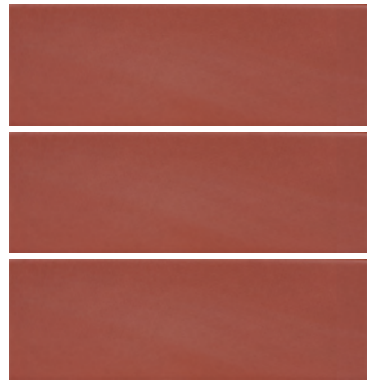
POSE LAYING SCHEME



POSE LAYING SCHEME



CANNELLA LUCIDO FGB110L ■10



CANNELLA MATT FGB123M ■10

STUCCHI CONSIGLIATI SUGGESTED GROUTS

Kerakoll

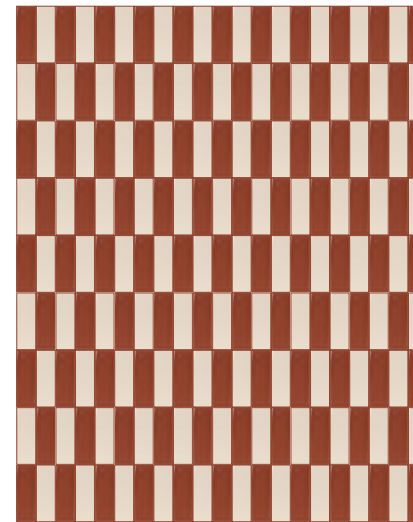
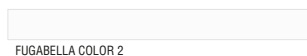
Mapei

Laticrete

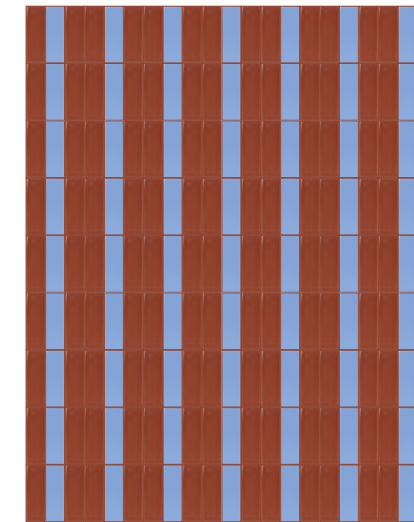
TONO SU TONO
TONE ON TONE



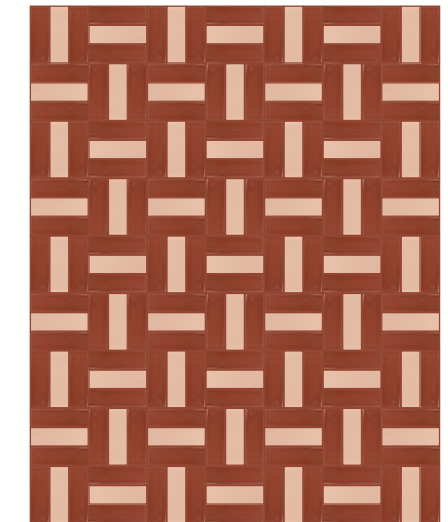
A CONTRASTO
CONTRASTING



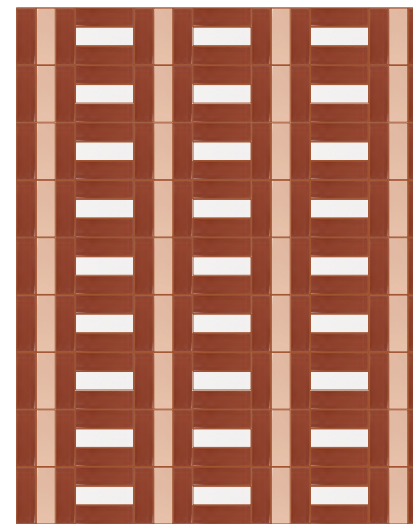
COPPER BEECH 36
50% CANNELLA | 50% SABBIA



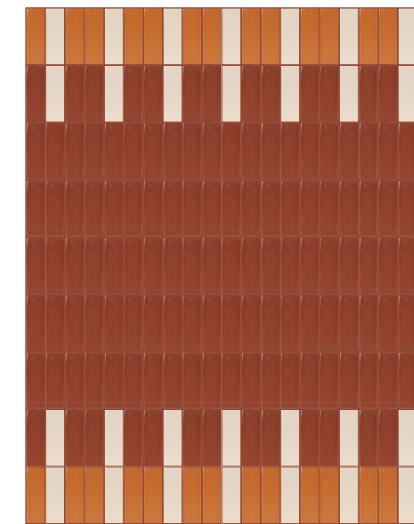
COPPER BEECH 36
66% CANNELLA | 34% CIELO



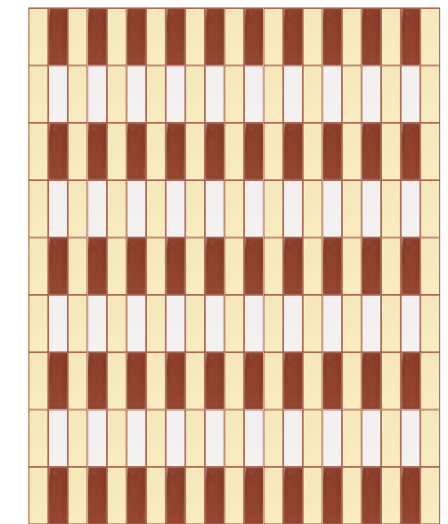
COPPER BEECH 36
66% CANNELLA | 34% CIPRIA



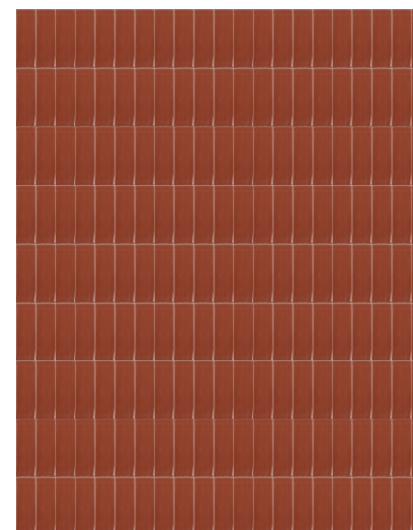
COPPER BEECH 36
66% CANNELLA | 19% CIPRIA | 15% BIANCO



COPPER BEECH 36
70% CANNELLA | 15% ARANCIO | 15% SABBIA



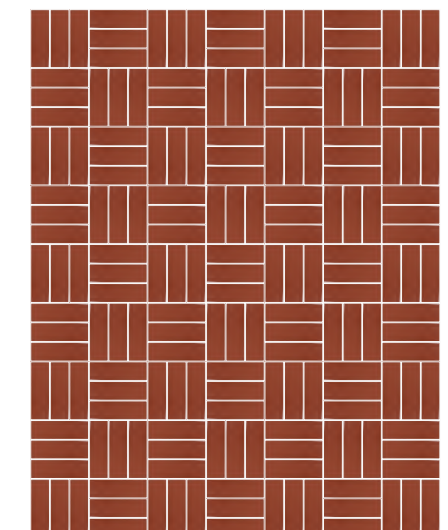
COPPER BEECH 36
27% CANNELLA | 20% BIANCO | 53% CHAMPAGNE



COPPER BEECH 36
100% CANNELLA



CERULEAN 168
100% CANNELLA



FUGABELLA COLOR 2
100% CANNELLA

BORGOGNA

SCHEMI DI POSA LAYING SCHEME

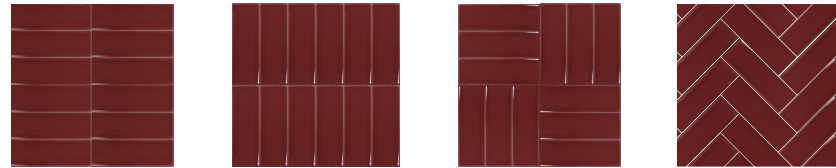
Gres porcellanato
Porcelain stoneware

5X15CM
2"X6"

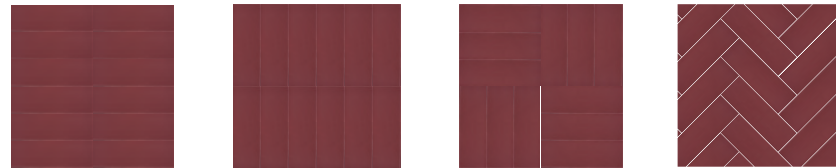
8MM

Monocromatico
Monochromatic

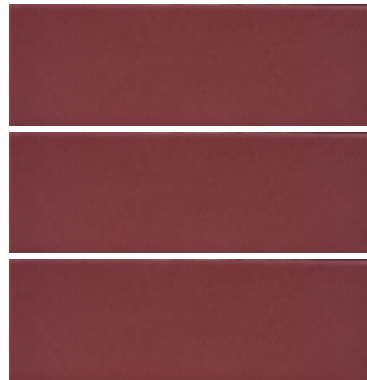
POSE LAYING SCHEME



POSE LAYING SCHEME



BORGOGNA LUCIDO FGB111L ■10



BORGOGNA MATT FGB124M ■10

STUCCHI CONSIGLIATI SUGGESTED GROUTS

Kerakoll

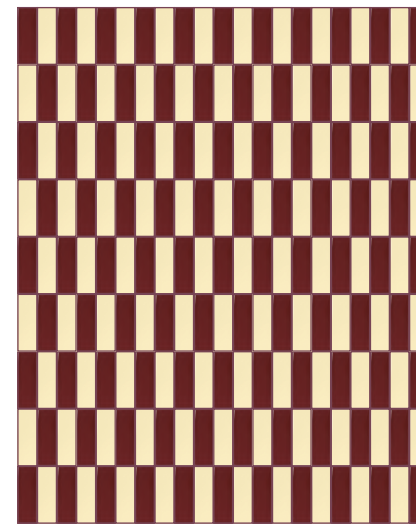
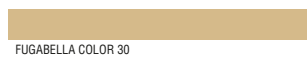
Mapei

Laticrete

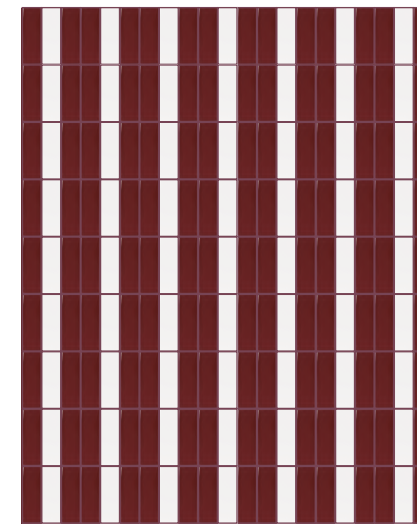
TONO SU TONO
TONE ON TONE



A CONTRASTO
CONTRASTING



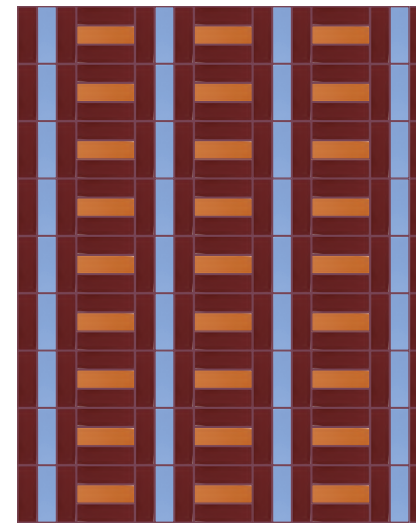
QUARRY RED 46
50% BORGOGNA | 50% CHAMPAGNE



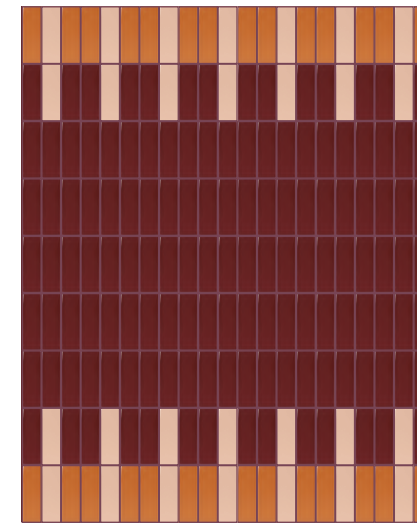
QUARRY RED 46
66% BORGOGNA | 34% BIANCO



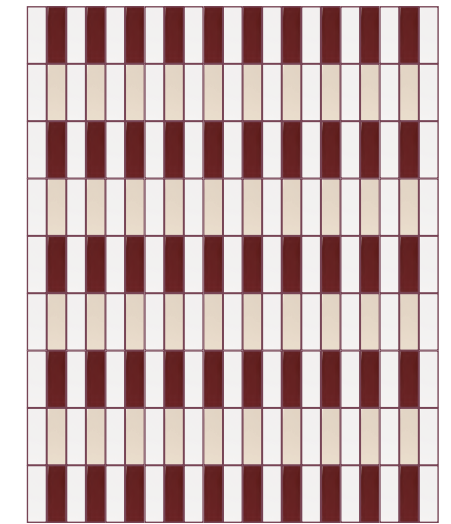
QUARRY RED 46
66% BORGOGNA | 34% CENERI



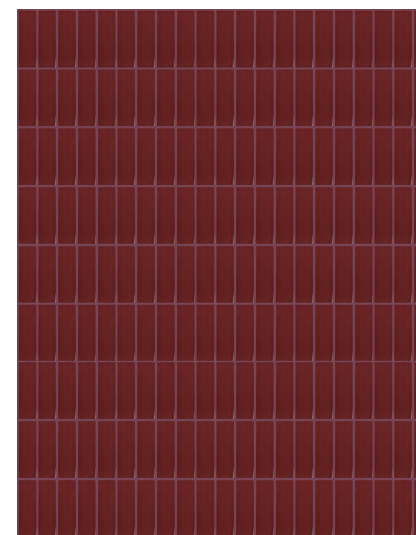
QUARRY RED 46
66% BORGOGNA | 19% CIELO | 15% ARANCIO



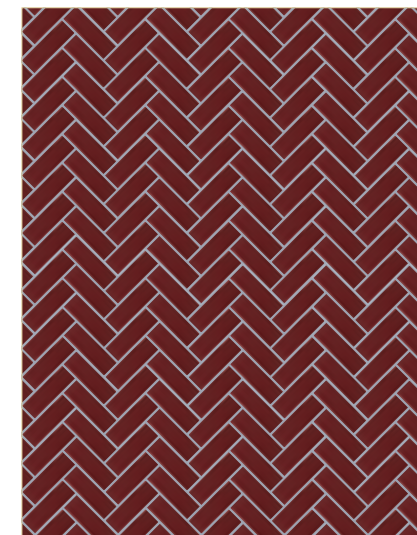
QUARRY RED 46
70% BORGOGNA | 15% CIPRIA | 15% ARANCIO



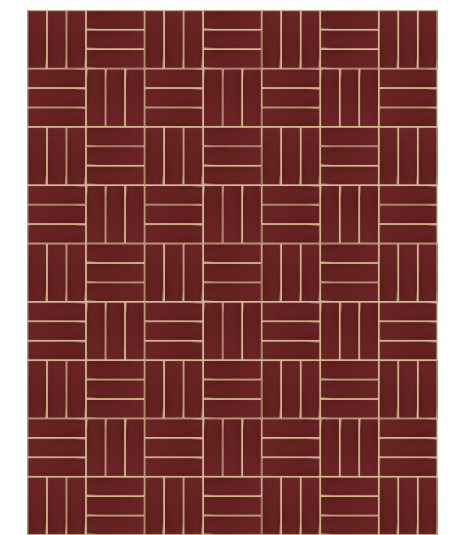
QUARRY RED 46
27% BORGOGNA | 20% SABBIA | 53% BIANCO



QUARRY RED 46
100% BORGOGNA



FUGABELLA COLOR 13
100% BORGOGNA



KASHMIRE 41
100% BORGOGNA

CHAMPAGNE

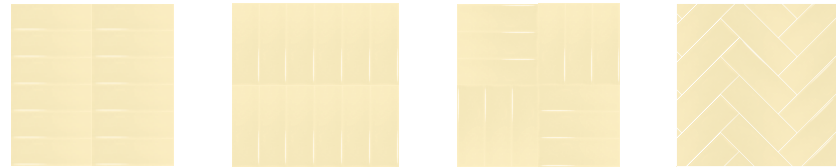
SCHEMI DI POSA LAYING SCHEME

Gres porcellanato
Porcelain stoneware

5X15CM
2"X6"

8MM
Monocromatic
Monochromatic

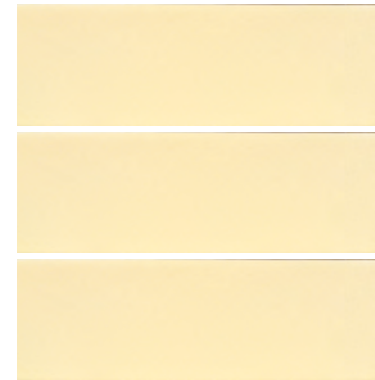
POSE LAYING SCHEME



POSE LAYING SCHEME



CHAMPAGNE LUCIDO FGB112L ■09



CHAMPAGNE MATT FGB125M ■09

STUCCHI CONSIGLIATI SUGGESTED GROUTS

Kerakoll

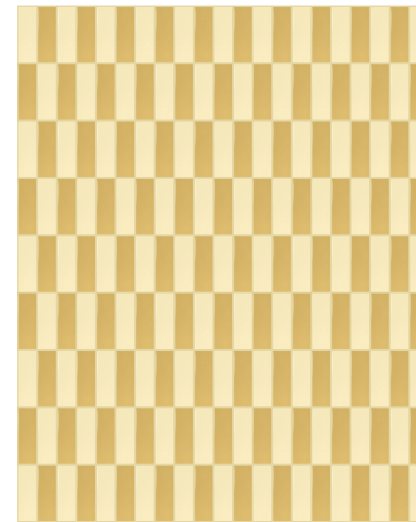
Mapei

Laticrete

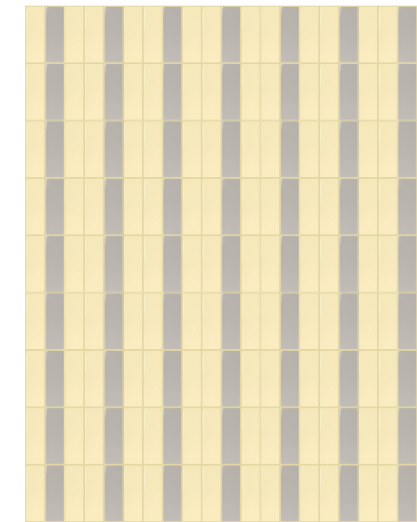
TONO SU TONO
TONE ON TONE



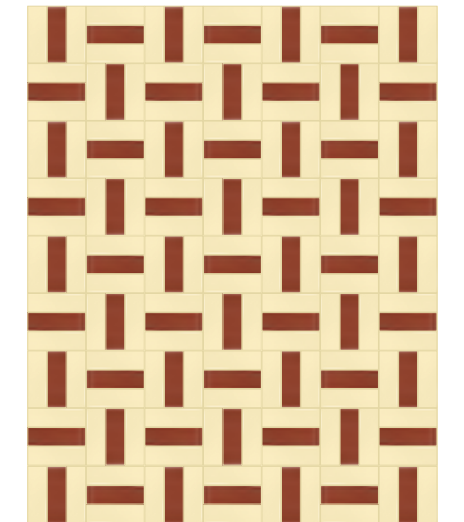
A CONTRASTO
CONTRASTING



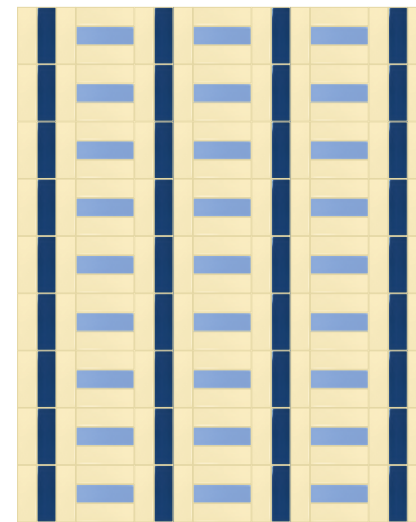
FUGABELLA COLOR 29
50% CHAMPAGNE | 50% SENAPE



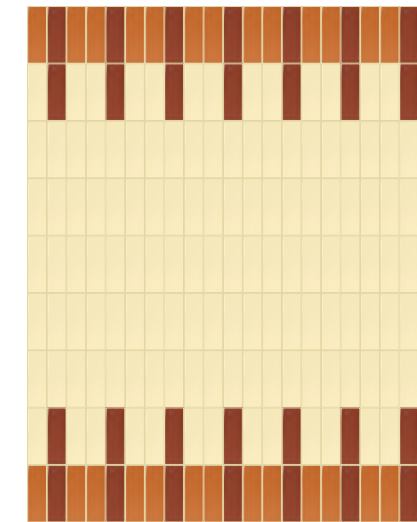
FUGABELLA COLOR 29
66% CHAMPAGNE | 34% CENERE



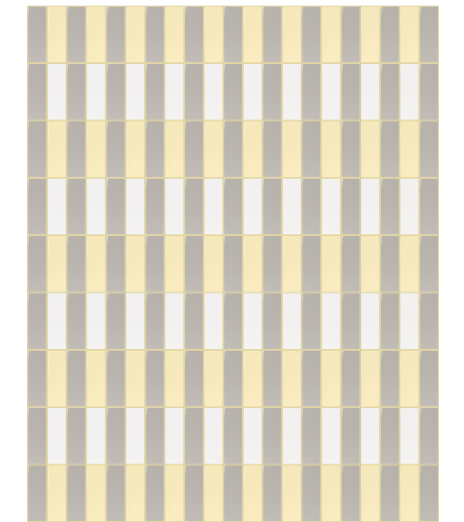
FUGABELLA COLOR 29
66% CHAMPAGNE | 34% CANNELLA



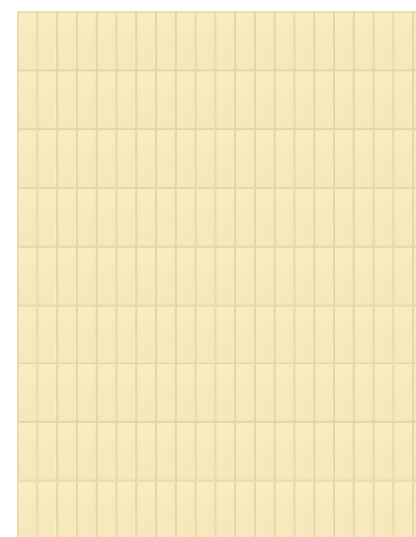
FUGABELLA COLOR 29
66% CHAMPAGNE | 19% OCEANO | 15% CIELO



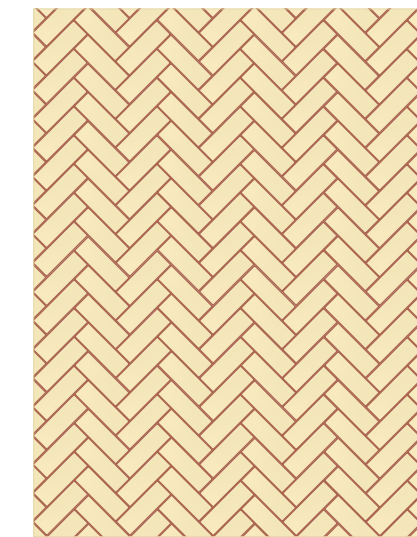
FUGABELLA COLOR 29
70% CHAMPAGNE | 15% CANNELLA | 15% ARANCIO



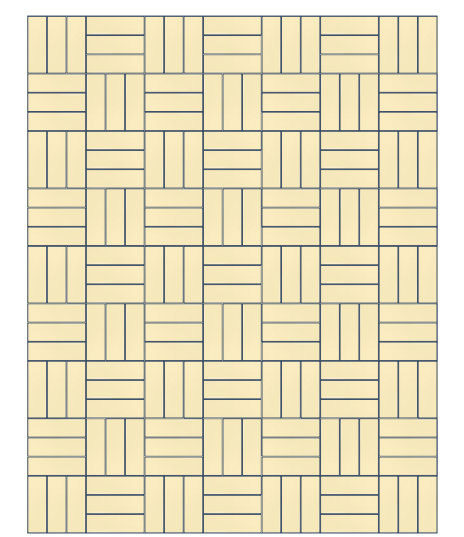
FUGABELLA COLOR 29
27% CHAMPAGNE | 20% BIANCO | 53% CENERE



FUGABELLA COLOR 29
100% CHAMPAGNE



COPPER BEECH 36
100% CHAMPAGNE



FUGABELLA COLOR 16
100% CHAMPAGNE

SENAPE

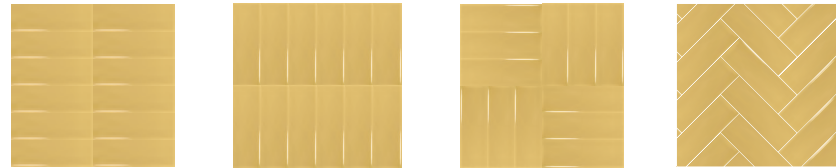
SCHEMI DI POSA LAYING SCHEME

Gres porcellanato
Porcelain stoneware

5X15CM
2"X6"

8MM
Monocromatico
Monochromatic

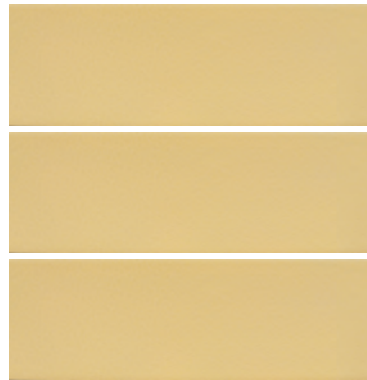
POSE LAYING SCHEME



POSE LAYING SCHEME



SENAPE LUCIDO FGB113L ■09



SENAPE MATT FGB126M ■09

STUCCHI CONSIGLIATI SUGGESTED GROUTS

Kerakoll

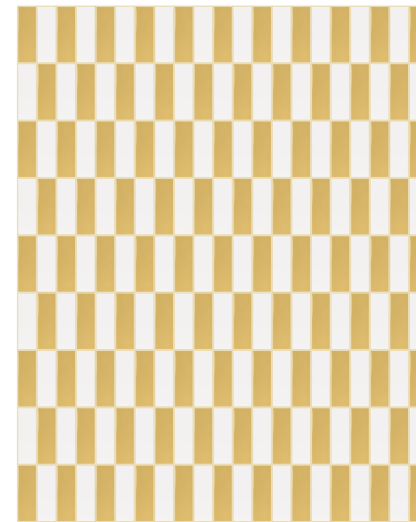
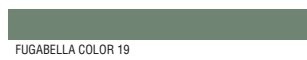
Mapei

Laticrete

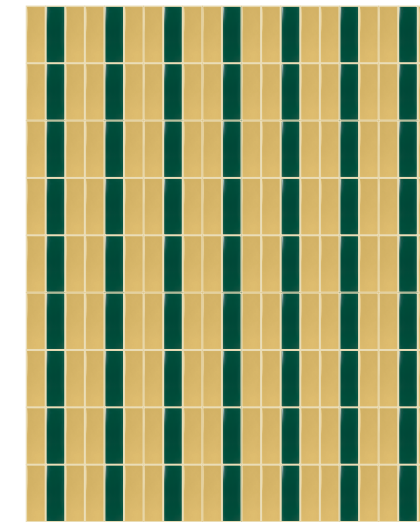
TONO SU TONO
TONE ON TONE



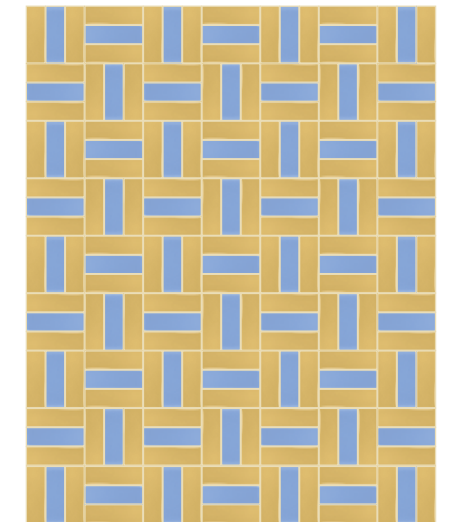
A CONTRASTO
CONTRASTING



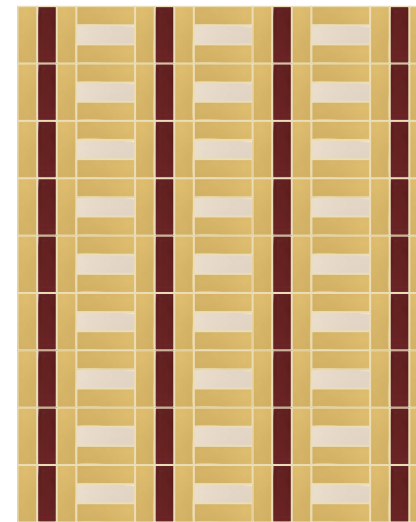
ALMOND 138
50% SENAPE | 50% BIANCO



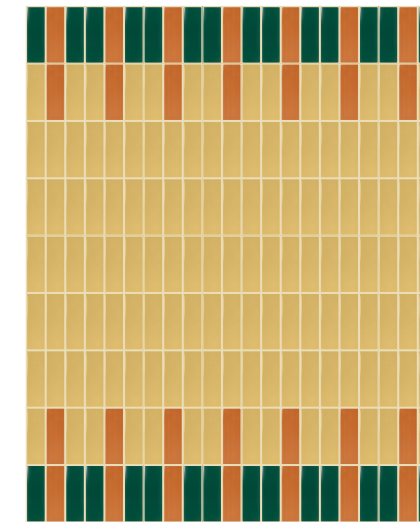
ALMOND 138
66% SENAPE | 34% SMERALDO



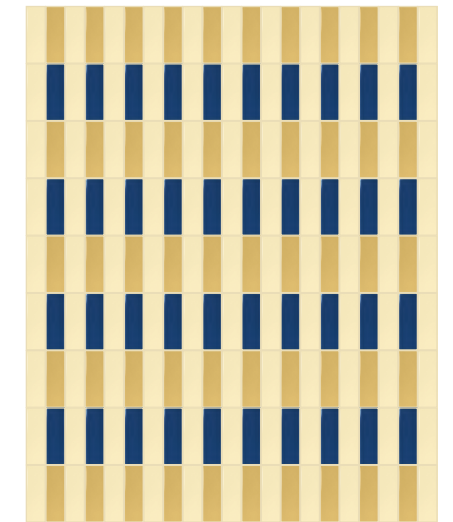
ALMOND 138
66% SENAPE | 34% CIELO



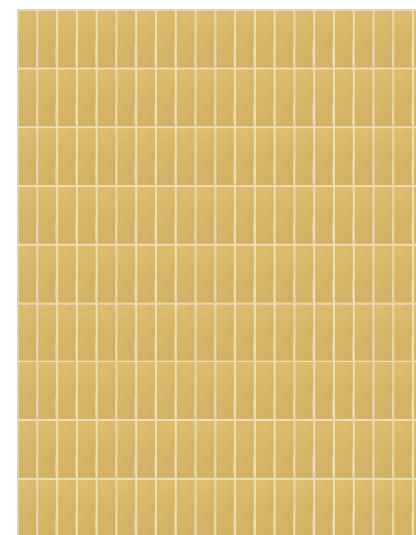
ALMOND 138
66% SENAPE | 19% BORGOGNA | 15% SABBIA



ALMOND 138
70% SENAPE | 15% SMERALDO | 15% ARANCIO



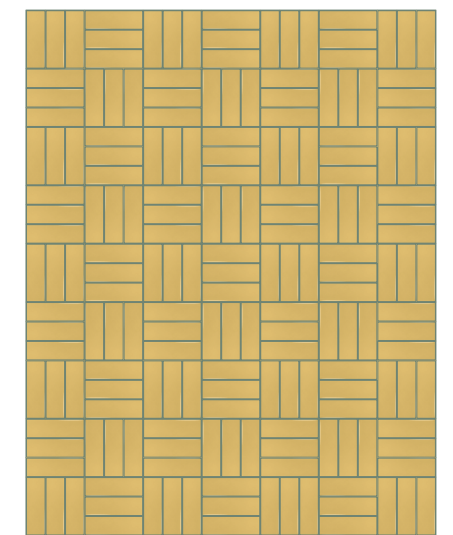
ALMOND 138
27% SENAPE | 20% OCEANO | 53% CHAMPAGNE



ALMOND 138
100% SENAPE



CHAMBRAY 37
100% SENAPE



FUGABELLA COLOR 19
100% SENAPE

SABBIA

SCHEMI DI POSA LAYING SCHEME

Gres porcellanato
Porcelain stoneware

5X15CM
2"X6"

8MM
Monocromatic
Monochromatic

POSE LAYING SCHEME



POSE LAYING SCHEME



SABBIA LUCIDO FGB102L ■09



SABBIA MATT FGB115M ■09

STUCCHI CONSIGLIATI SUGGESTED GROUTS

Kerakoll

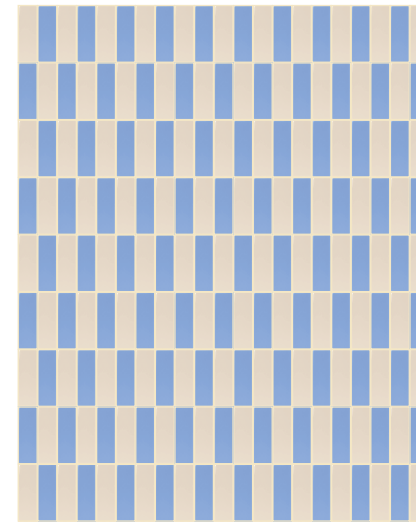
Mapei

Laticrete

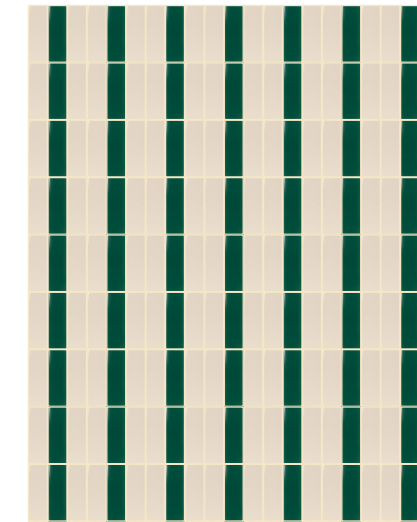
TONO SU TONO
TONE ON TONE



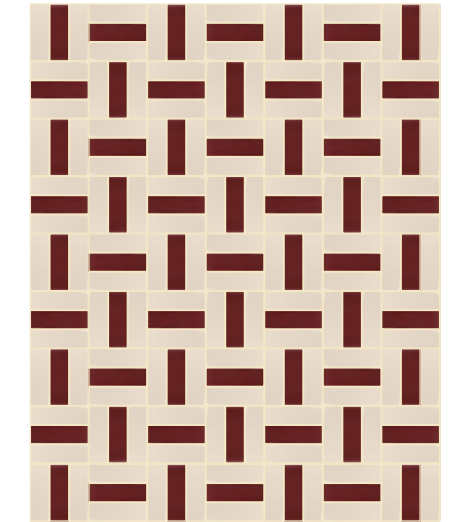
A CONTRASTO
CONTRASTING



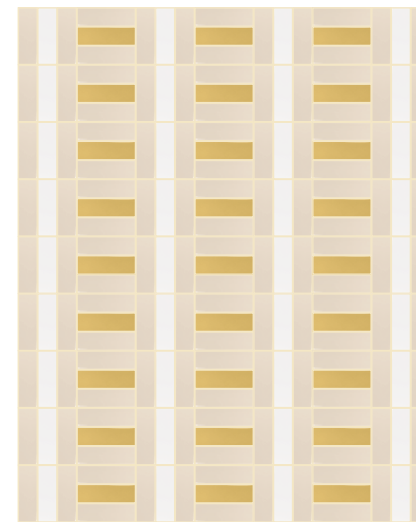
MUSHROOM 39
50% SABBIA | 50% CIELO



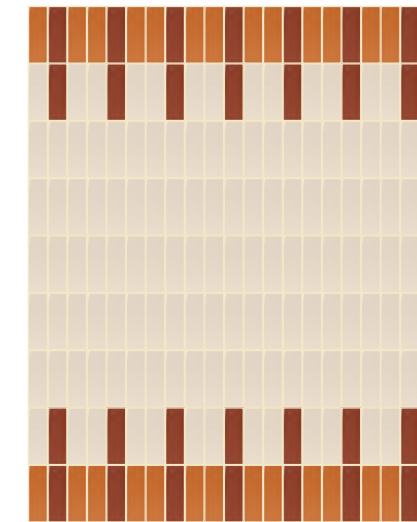
MUSHROOM 39
66% SABBIA | 34% SMERALDO



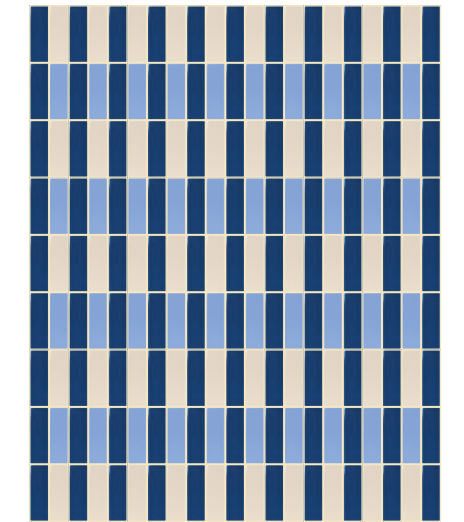
MUSHROOM 39
66% SABBIA | 34% BORGOGNA



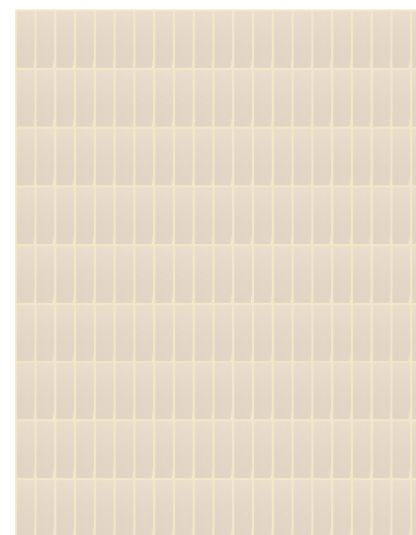
MUSHROOM 39
66% SABBIA | 19% BIANCO | 15% SENAPE



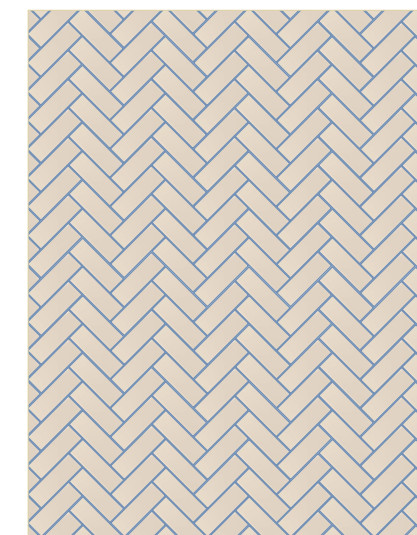
MUSHROOM 39
70% SABBIA | 15% CANNELLA | 15% ARANCIO



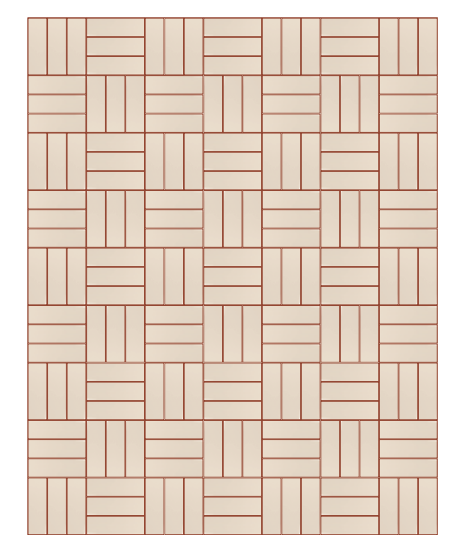
MUSHROOM 39
27% SABBIA | 20% CIELO | 53% OCEANO



MUSHROOM 39
100% SABBIA



CERULEAN 168
100% SABBIA



COPPER BEECH 36
100% SABBIA

CENERE

SCHEMI DI POSA LAYING SCHEME

Gres porcellanato
Porcelain stoneware

5X15CM
2"X6"

8MM
Monocromatic
Monochromatic

POSE LAYING SCHEME



POSE LAYING SCHEME



CENERE LUCIDO FGB103L ■09



CENERE MATT FGB116M ■09

STUCCHI CONSIGLIATI SUGGESTED GROUTS

Kerakoll

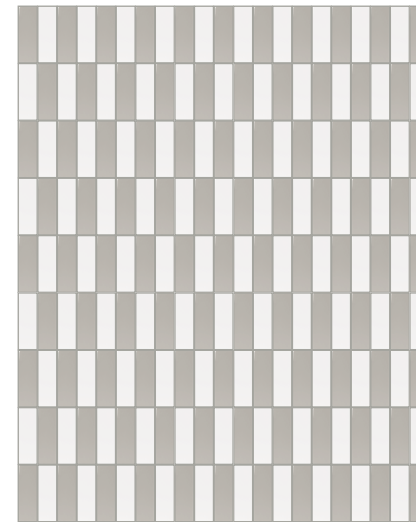
Mapei

Laticrete

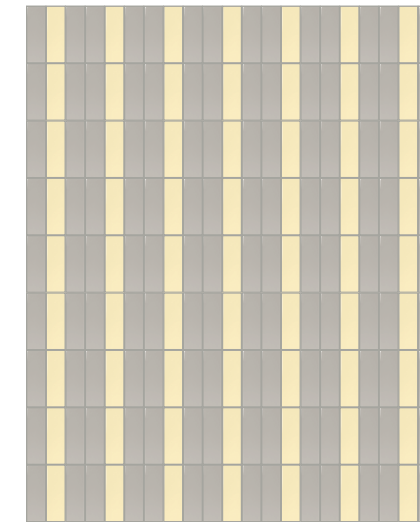
TONO SU TONO
TONE ON TONE



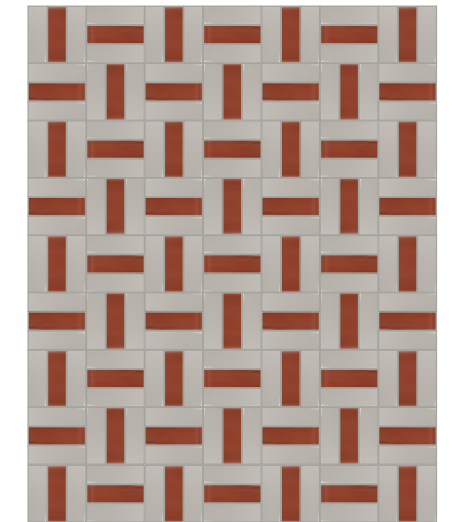
A CONTRASTO
CONTRASTING



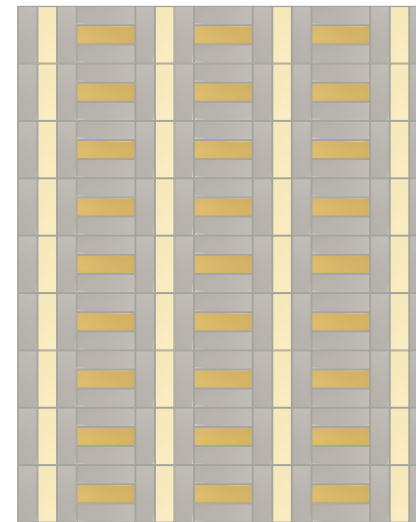
STERLING SILVER 78
50% CENERE | 50% BIANCO



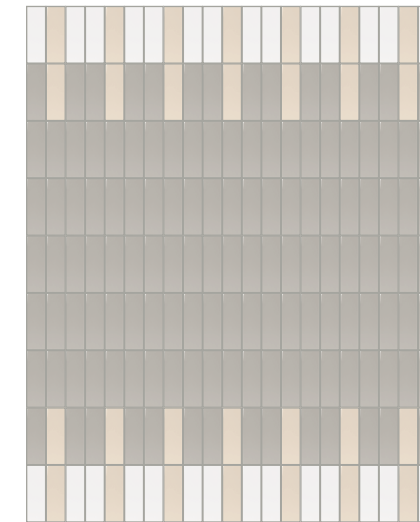
STERLING SILVER 78
66% CENERE | 34% CHAMPAGNE



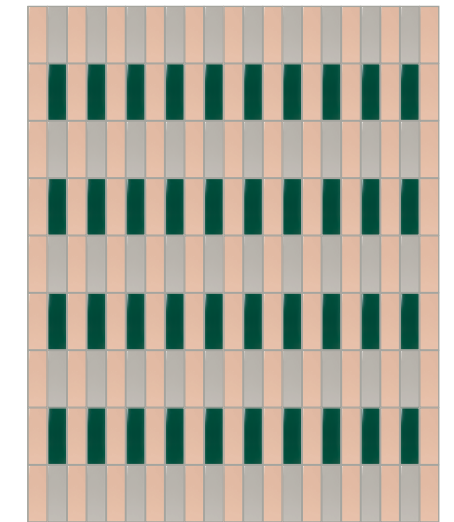
STERLING SILVER 78
66% CENERE | 34% CANNELLA



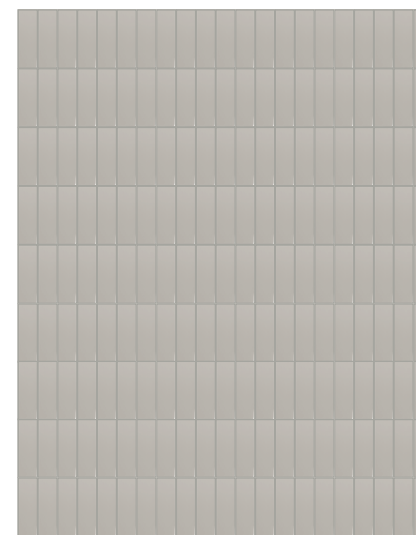
STERLING SILVER 78
66% CENERE | 19% CHAMPAGNE | 15% SENAPE



STERLING SILVER 78
70% CENERE | 15% BIANCO | 15% SABBIA



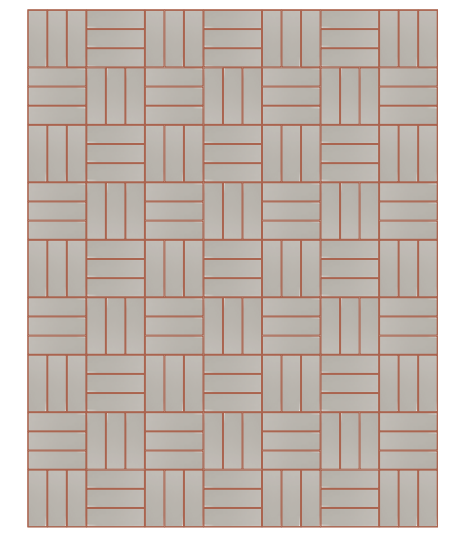
STERLING SILVER 78
27% CENERE | 20% SMERALDO | 53% CIPRIA



STERLING SILVER 78
100% CENERE



BOSTON FERN 33
100% CENERE



COPPER BEECH 36
100% CENERE

BIANCO

SCHEMI DI POSA LAYING SCHEME

Gres porcellanato
Porcelain stoneware

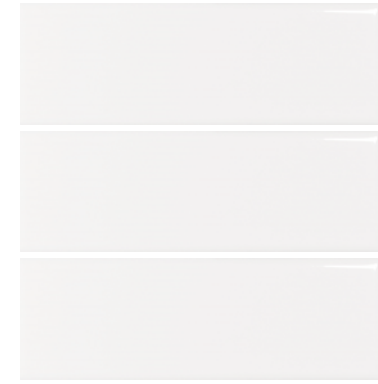
5X15CM
2"X6"

8MM
Monocromatic
Monochromatic

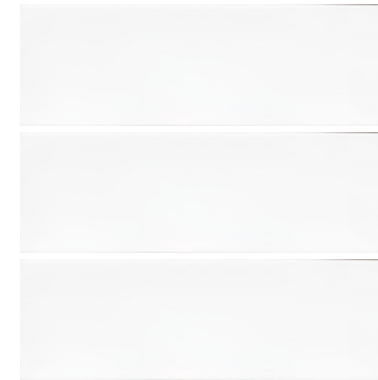
POSE LAYING SCHEME



POSE LAYING SCHEME



BIANCO LUCIDO FGB101L ■09



BIANCO MATT FGB114M ■09

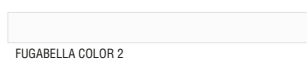
STUCCHI CONSIGLIATI SUGGESTED GROUTS

Kerakoll

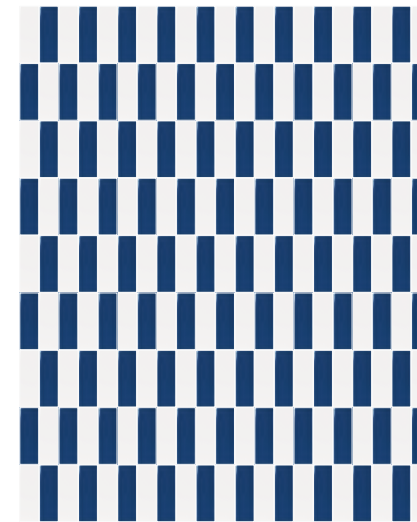
Mapei

Laticrete

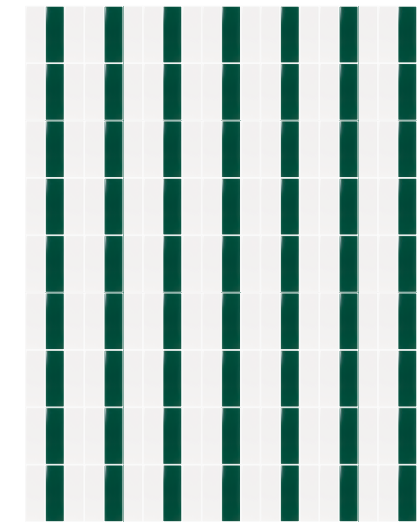
TONO SU TONO
TONE ON TONE



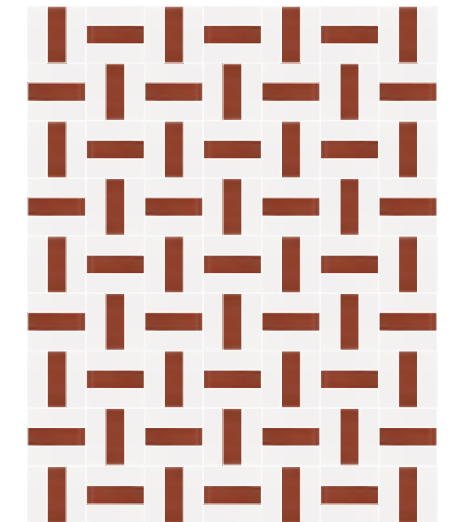
A CONTRASTO
CONTRASTING



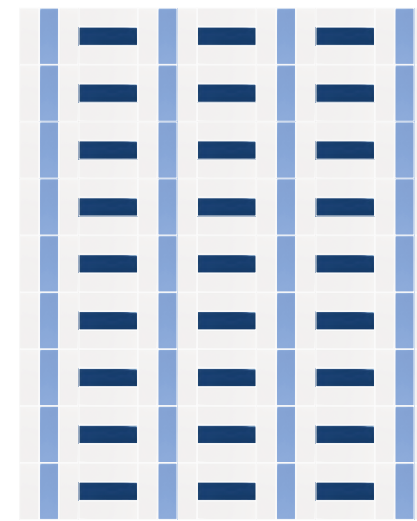
FUGABELLA COLOR 2
50% BIANCO | 50% OCEANO



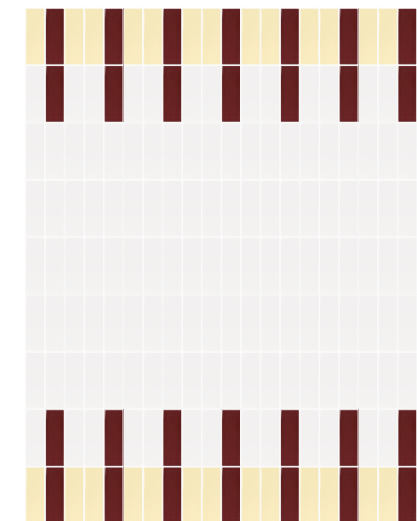
FUGABELLA COLOR 2
66% BIANCO | 34% SMERALDO



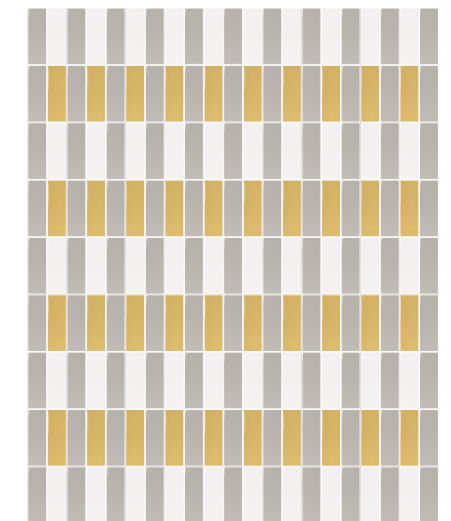
FUGABELLA COLOR 2
66% BIANCO | 34% CANNELLA



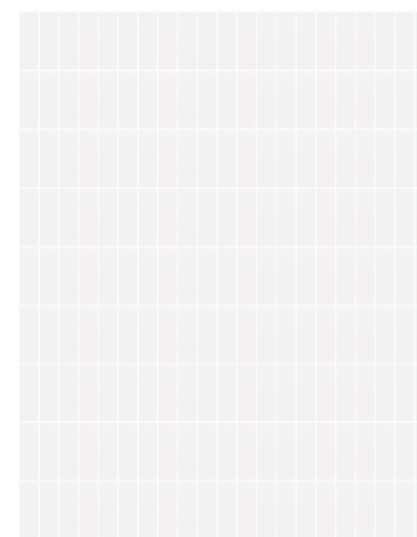
FUGABELLA COLOR 2
66% BIANCO | 19% CIELO | 15% OCEANO



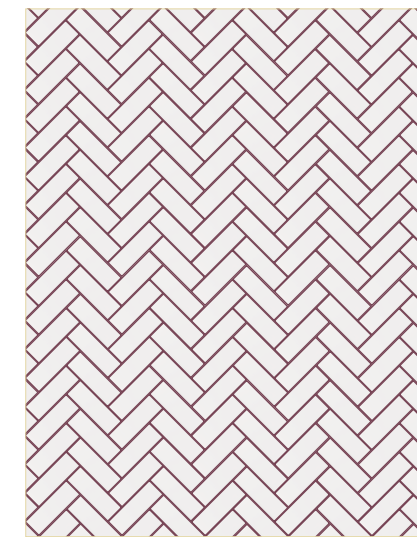
FUGABELLA COLOR 2
70% BIANCO | 15% BORGOGNA | 15% CHAMPAGNE



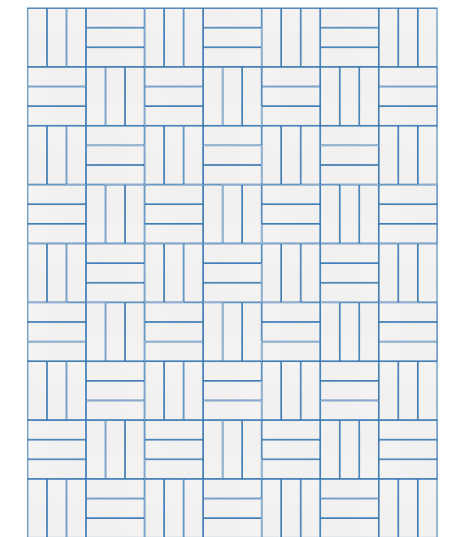
FUGABELLA COLOR 2
27% BIANCO | 20% SENAPE | 53% CENERE



FUGABELLA COLOR 2
100% BIANCO



QUARRY RED 46
100% BIANCO

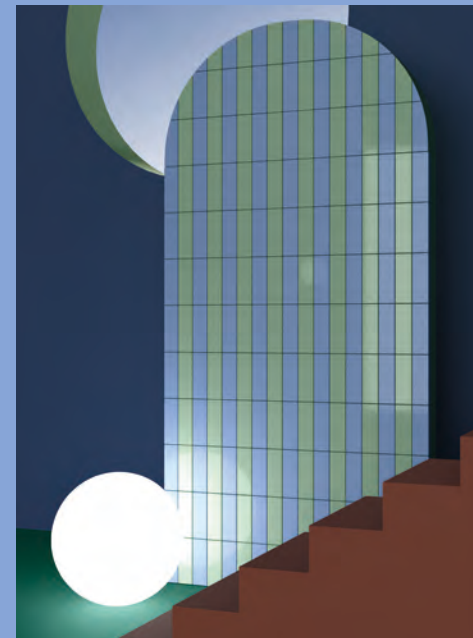


ARTIC BLUE 04
100% BIANCO



INTERAZIONI COLORE INTERPLAY COLOUR

/ COLOUR COMBINATIONS



Färgblock menta lucido, cielo matt



Färgblock senape matt, borgogna matt, cielo matt, arancio matt



Färgblock arancio lucido, senape matt, cipria lucido



Färgblock arancio matt, cannella lucido, smeraldo lucido, borgogna lucido

Färgblock borgogna lucido, arancio matt, cannella matt, champagne matt, smeraldo lucido, menta matt

CARATTERISTICHE TECNICHE TECHNICAL FEATURES

		NORMA standard	VALORE RICHIESTO required standards	FÄRGBLOCK LUCIDO	FÄRGBLOCK MATT
DIMENSIONI dimensions	LUNGHEZZA E LARGHEZZA length and width	UNI-EN ISO 10545-2	± 0.6%	CONFORME compliant	CONFORME compliant
	SPESORE thickness	UNI-EN ISO 10545-2	± 5%	CONFORME compliant	CONFORME compliant
	RETTILINEITÀ DEGLI SPIGOLI straightness of sides	UNI-EN ISO 10545-2	± 0.5%	CONFORME compliant	CONFORME compliant
	ORTOGONALITÀ rectangularity	UNI-EN ISO 10545-2	± 0.5%	CONFORME compliant	CONFORME compliant
	PLANARITÀ: surface flatness: CURVATURA DEL CENTRO centre curvature CURVATURA DELLO SPIGOLO edge curvature SVERGOLAMENTO warpage	UNI-EN ISO 10545-2	± 0.5%	CONFORME compliant	CONFORME compliant
RESISTENZA ALLA FLESSIONE bending strenght	CARICO DI ROTTURA breaking of rupture	UNI-EN ISO 10545-4	> 1300 N (≥ 7,5 MM) > 700 N (< 7,5 MM)	CONFORME compliant	CONFORME compliant
	MODULO DI ROTTURA modulus of rupture	UNI-EN ISO 10545-4	> 35 N/MM ² (≥ 7,5 MM)	CONFORME compliant	CONFORME compliant
	RESISTENZA ALL'ABRASIONE DELLE PIASTRELLE SMALTATE resistance to abrasion of glazed tiles	UNI-EN ISO 10545-7	-	CLASSE 3 COLORI CHIARI CLASSE 2 COLORI SCURI class 3 light colors class 2 dark colors	CLASSE 3 COLORI CHIARI CLASSE 2 COLORI SCURI class 3 light colors class 2 dark colors
	ASSORBIMENTO D'ACQUA water absorption	UNI-EN ISO 10545-3	≤ 0,5 %	CONFORME compliant	CONFORME compliant
	RESISTENZA DEI COLORI ALLA LUCE colour resistance to light	DIN 51094	-	RESISTENTE resistant	RESISTENTE resistant
	COEFFICIENTE DI DILATAZIONE TERMICA LINEARE (100° C) linear thermal expansion coefficient (100° C)	UNI-EN ISO 10545-8	METODO DISPONIBILE test method available	METODO DISPONIBILE test method available	METODO DISPONIBILE test method available
	RESISTENZA AGLI SBALZI TERMICI thermal shock resistance	UNI-EN ISO 10545-9	-	RESISTENTE resistant	RESISTENTE resistant
	RESISTENZA AL GELO frost resistance	UNI-EN ISO 10545-12	-	RESISTENTE resistant	RESISTENTE resistant
	RESISTENZA AL CAVILLO crazing resistance	UNI-EN ISO 10545-11	-	RESISTENTE resistant	RESISTENTE resistant
	RESISTENZA ALLE MACCHIE resistance to stains	UNI-EN ISO 10545-14	CLASSE 3 MIN.	CLASSE 5 Class 5	CLASSE 5 Class 5
	RESISTENZA CHIMICA chemical resistance	UNI-EN ISO 10545-13	GB MIN.	GARANTITA guaranteed (GA GLA GHA)	GARANTITA guaranteed (GA GLA GHA)
	PIOMBO E CADMIO RILASCIATI lead and cadmium given off	UNI-EN ISO 10545-15	METODO DISPONIBILE test method available	METODO DISPONIBILE test method available	METODO DISPONIBILE test method available
	REAZIONE AL FUOCO reaction to fire	EN 13501-1	-	A1 _{FL} -A1	A1 _{FL} -A1
	ANGOLO CRITICO DI SLITTAMENTO slip resistance (ramp test)	DIN 51130	-	-	R9
	RESISTENZA ALLO SLITTAMENTO slip resistance (pendulum test)	UNI-EN ISO 16165 C	-	-	37 WET
	RESISTENZA ALLO SLITTAMENTO slip resistance (pendulum test)	AS/NZS 4586	≥ 42	-	P3
	COEFFICIENTE DINAMICO DI ATTRITO SUL BAGNATO (DCOF) wet dynamic coefficient of friction (DCOF)	ANSI A137.1-BOT 3000	-	-	CONFORME compliant
	VARIAZIONE DI TONO shade variations	-	-	V1	V1

GRES PORCELLANATO SMALTATO GLAZED PORCELAIN

Piastrelle di ceramica pressate a secco con assorbimento d'acqua Eb ≤ 0,5 %. Caratteristiche di qualità secondo i test di controllo previsti dalla norma EN14411:2013 appendice L gruppo Bla GL

Dry-pressed ceramic tiles with water absorption Eb ≤ 0,5 %. Quality specification, according to control test of EN14411:2013 appendix L group Bla GL

Imballi Packing

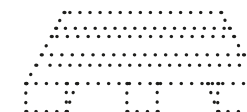
ARTICOLO ITEM	FORMATO SIZE	PZ	MQ	KG
färgbblock matt	5X15cm 2"x6"	80	0,6	10,9
färgbblock lucido	5X15cm 2"x6"	80	0,6	10,9

SCATOLA BOX

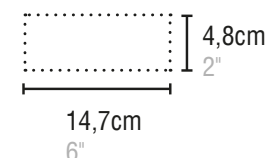


ARTICOLO ITEM	FORMATO SIZE	BOX	PZ	MQ	KG
färgbblock matt	5X15cm 2"x6"	84	6720	50,4	936
färgbblock lucido	5X15cm 2"x6"	84	6720	50,4	936

PALLET PALLET



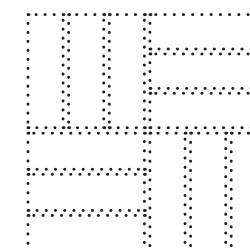
Dimensioni Sizing



Fuga Joint

Posa Modulare Modular installation

fuga consigliata 1,5mm suggested joint 1,5mm



Colori NCS Colour NCS

bianco	NCS S 0500-N
sabbia	NCS S 1505-Y40R
cenere	NCS S 3502-R
champagne	NCS S1515-Y10R
senape	NCS S 3030-Y10R
borgogna	NCS S 5030-R
cannella	NCS S 4040-Y80R
arancio	NCS S 3040-Y60R
cipria	NCS S 2020-Y60R
menta	NCS S 2020-G10Y
smeraldo	NCS S 6030-G
cielo	NCS S 2030-R80B
oceano	NCS S 6020-R70B

Abbinamenti consigliati Suggested Combinations

Confetti | Oltre | Minima8.6 | Alchimia | Pigmento



Quotations, Samples + Information

Freephone: 0800 021 4835

Email: info@ctdarchitecturaltiles.co.uk

Follow us:  [ctdarchitecturaltiles](#)  [ctd architectural tiles](#)  [@architecttiles](#)

 [architecttiles](#)  [architecttiles](#)

ctdarchitecturaltiles.co.uk

